

A 209 Dana Street Ballarat
Victoria 3350 Australia

T (03) 5337 4000
F (03) 5331 1776

P PO Box 626W Ballarat West
Victoria 3350 Australia

E info@rexminerals.com.au
W www.rexminerals.com.au



ASX and Media Release: 26 February 2010
ASX code: RXM

Investor Presentation March 2010

Rex Minerals Ltd (Rex) is pleased to release its latest presentation.

This presentation will be used for investor relations and the upcoming Australian Copper Conference in Brisbane.

For Comment and Further Details

For more information about Rex Minerals and its projects please visit our website www.rexminerals.com.au or contact

Steven Olsen (Managing Director)
or Amber Rivamonte (Company Secretary)
Phone: 03-5337-4000
E-mail: info@rexminerals.com.au

Media inquiries to:
Simon Jemison C/. Collins Street Media
Phone: 0408-004-848 or 03-9224-5319
Email: simon@collinsstreetmedia.com.au

Rex Presentation
March 2010



Steven Olsen

Disclaimer

The presentation (in this projected form and as verbally presented) ("Presentation") is provided on the basis that none of the Company nor its respective officers, shareholders, related bodies corporate, partners, affiliates, employees, representatives and advisers make any representation or warranty (express or implied) as to the accuracy, reliability, relevance or completeness of the material contained in the Presentation and nothing contained in the Presentation is, or may be relied upon as a promise, representation or warranty, whether as to the past or the future. The Company hereby excludes all warranties that can be excluded by law.



The Presentation contains prospective financial material which is predictive in nature and may be affected by inaccurate assumptions or by known or unknown risks and uncertainties and may differ materially from results ultimately achieved.

The Presentation contains "forward-looking statements". All statements other than those of historical facts included in the Presentation are forward-looking statements. Where the Company expresses or implies an expectation or belief as to future events or results, such expectation or belief is expressed in good faith and believed to have a reasonable basis. However, forward-looking statements are subject to risks, uncertainties and other factors, which could cause actual results to differ materially from future results expressed, projected or implied by such forward-looking statements. Such risks include, but are not limited to, gold and other metals price volatility, currency fluctuations, increased production costs and variances in ore grade or recovery rates from those assumed in mining plans, as well as political and operational risks and governmental regulation and judicial outcomes. The Company does not undertake any obligation to release publicly any revisions to any "forward-looking statement".

The Presentation contains general background information about the Company and its activities current as at the date of this presentation, 1 March 2010. The information in this Presentation is in summary form only and does not contain all the information necessary to fully evaluate any transaction or investment. It should be read in conjunction with the Company's other periodic and continuous disclosure announcements lodged with the ASX, which are available at www.asx.com.au and other publicly available information on the Company available at www.rexminerals.com.au.

The Presentation does not constitute an offer, invitation or recommendation to subscribe for or purchase any security and does not form the basis of any contract or commitment. The Presentation, the entitlement offer and the contracts formed on acceptance of the relevant applications are governed by the laws applicable in Victoria, Australia. Each person who applies for new shares submits to the jurisdiction of the courts of Victoria, Australia.

All persons should consider seeking appropriate professional advice in reviewing the Presentation and the Company.

The information in this presentation that relates to Exploration Results, Mineral Resources and Exploration Potential is based on information compiled by Mr Geoffrey Lowe. Mr Lowe is an employee of Rex Minerals Ltd, is a member of the Australian Institute of Mining and Metallurgy and is a Competent Person under the definition of the 2004 JORC Code. The Exploration Potential described in this Presentation is conceptual in nature, and there is insufficient information to establish whether further exploration will result in the determination of a Mineral Resource. Mr Lowe consents to the publication of this information in the form and content in which it appears.



Rex is an Australian minerals exploration company.

Rex is aiming to discover multiple copper deposits on the Yorke Peninsula, leading to the development of a new large-scale, low cost and long life mining operation in South Australia.

Rex is also searching for large scale copper mineralisation at the Mt Carrington project in NSW. Mt Carrington has existing shallow gold and silver Resources with the potential for additional silver, gold and/or copper mineralisation.

This presentation will focus on the important attributes that make up these two major assets that Rex owns 100%.

The planned timeline for the growth of Rex's copper-gold projects in South Australia is also discussed

Corporate Snapshot



Ticker: RXM

Shares: 110.6 Mill + 5.9m options

Mkt Cap: \$188M at \$1.70 per share

Cash at Bank:

\$48M as at 31/12/09

Board & Management

Paul Chapman - Chairman

Steve Olsen - Managing Director

Richard Laufmann – Non Exec. Director

Brian Phillips – Non-Exec. Director

Geoff Lowe – Director of Exploration

Amber Rivamonte – Company Secretary

Janet Mason – CFO

• REX MINERALS LIMITED :

Major Shareholders

Directors & M'gement	10.7%
Grand South	8.2%
Acorn	6.7%
Greenstone Property	6.4%
Eye Investment	6.3%
IAM	4.3%
JP Morgan	4.3%
Avoca	2.8%

Mr Paul Chapman – Non Executive Chairman (B.Comm, ACA, Grad. Dip. Tax, CFTP(Snr), MAICD, SAFin)

Mr Paul Chapman is a chartered accountant and has over twenty years of resources experience gained in Australia and the US. He has worked in a number of commodity businesses including gold, nickel, manganese, bauxite/alumina and oil/gas. Mr Chapman's career includes 17 years with WMC where he held various senior commercial positions. Mr Chapman has held senior management roles in public companies of various sizes and is Chairman of Encounter Resources Ltd and also Silver Lake Resources Ltd.

Mr Richard Laufmann – Non Executive Director (B.Eng (Mining), MAusIMM, MAICD)

Mr Richard Laufmann is a mining engineer with a proven track record in the resources sector both in Australia and overseas. Mr Laufmann's career includes 11 years with WMC as a mining engineer and in various management roles. His extensive operational experience includes three years as General Manager of St Ives Gold in Western Australia. Mr Laufmann is currently the Managing Director of Indophil Resources, an ASX listed company operating in the Philippines.

Mr Brian Phillips - Non Executive Director (AWASM-Mining, FAusIMM, MIMMM)

Mr Brian Phillips is a mining engineer with over 40 years experience in the mining industry. He worked for the Goldfields Group in Tasmania, the United Kingdom and Western Australia. In 1981, he joined Metals Exploration Limited and served as an executive director of Metals Exploration, North Kalgurli Mines Limited and Gold Mines of Kalgoorlie Limited. Mr Phillips joined MPI Mines Limited in 1992 and was managing director from October 2002 until December 2004, followed by two years as chairman of Leviathan Resources Limited. Mr Phillips is currently a non-executive director of Panoramic Resources Limited and is also Chairman of Indophil Resources NL.

Mr Steven Olsen – Managing Director (B.Sc (Hons), M.Sc.(MinEx), Grad. Dip (F&I), MAusIMM)

Mr Steven Olsen has over 17 years experience in the resources industry with a background of 14 years working as a mine geologist and exploration geologist, predominantly in Western Australia and Canada, on nickel and gold deposits. Mr Olsen has had continued exploration success for both nickel and gold mineralisation throughout his career. Mr Olsen's qualifications include a B.Sc. (Hons) University of Melbourne, a Masters in Mineral Exploration from Queens University, Ontario and a Graduate Diploma of Applied Finance and Investment from the Securities Institute of Australia.

Mr Geoff Lowe – Executive Director, Exploration (B.Sc , MAusIMM)

Mr Geoff Lowe is a geologist with over 23 years experience in both greenfields and near mine exploration for gold and copper in Australia. His career includes 18 years with the Normandy Mining Group and Newmont Australia Limited where he held geological and senior management positions in Queensland, Northern Territory and South Australia followed by two years with Leviathan Resources Ltd and Perseverance Corporation Ltd. Mr Lowe joined Rex as Exploration Manager in August 2007 and he has established and managed the exploration portfolio and programs for the Company, leading the exploration team responsible for the discovery and delineation of the Hillside copper-gold deposit in South Australia.

Ms Amber Rivamonte – Company Secretary (CPA, B. Bus (Acc))

Ms Amber Rivamonte was originally appointed as company secretary with Rex in July 2007. Ms Rivamonte is a CPA and previously held the roles of CFO and company secretary at Rex Minerals and Ballarat Goldfields NL. Ms Rivamonte also previously held the role of company secretary at Indophil Resources NL and has over 16 years experience in the financial management of public listed exploration companies.

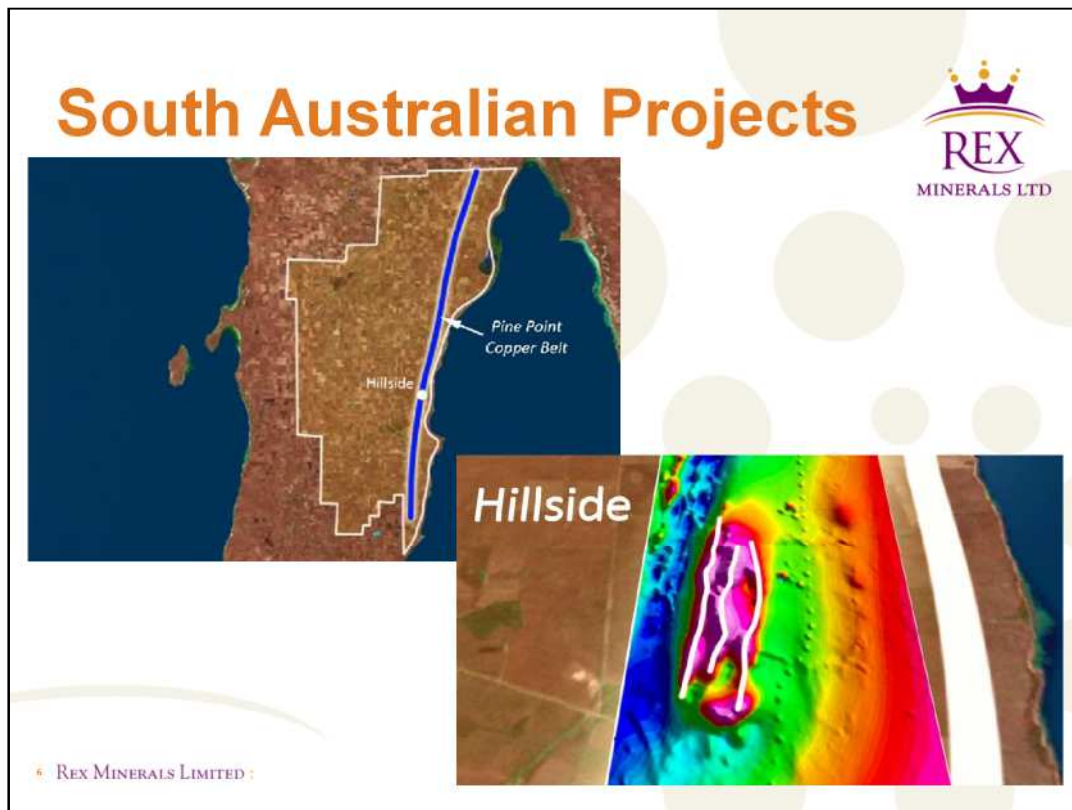


South Australian Projects Movie Presentation – can be downloaded separately from the Rex Minerals website www.rexminerals.com.au

Rex Minerals has exploration licences in one of the most prospective locations in the world for large scale copper, gold and uranium deposits. The licences are located in South Australia, within a geological terrane called the Gawler Craton. The Gawler Craton hosts Australia's largest historical copper mines which occur at Moonta, which is within 50km of Rex's exploration licences on the Yorke Peninsula.

Most of the rocks in the Gawler Craton are covered by a sequence of younger rocks that have effectively hidden many large copper deposits from the early explorers. In more recent times, exploration underneath these cover rocks has lead to the discovery of Olympic Dam, which is Australia's largest copper deposit, and also one of the world's largest polymetallic deposits.

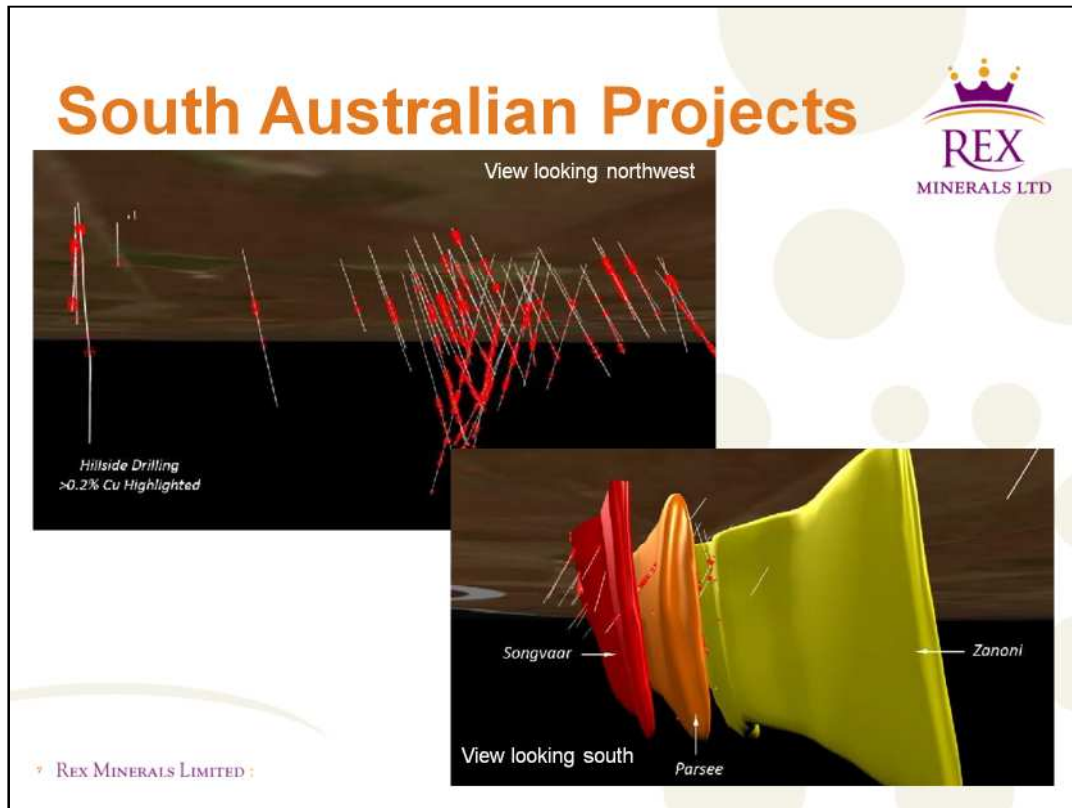
Additional discoveries such as Prominent Hill and Carapateena have shown that there is further potential to uncover large-scale copper deposits within the Gawler Craton.



South Australian Projects Movie Presentation – can be downloaded separately from the Rex Minerals website www.rexminerals.com.au

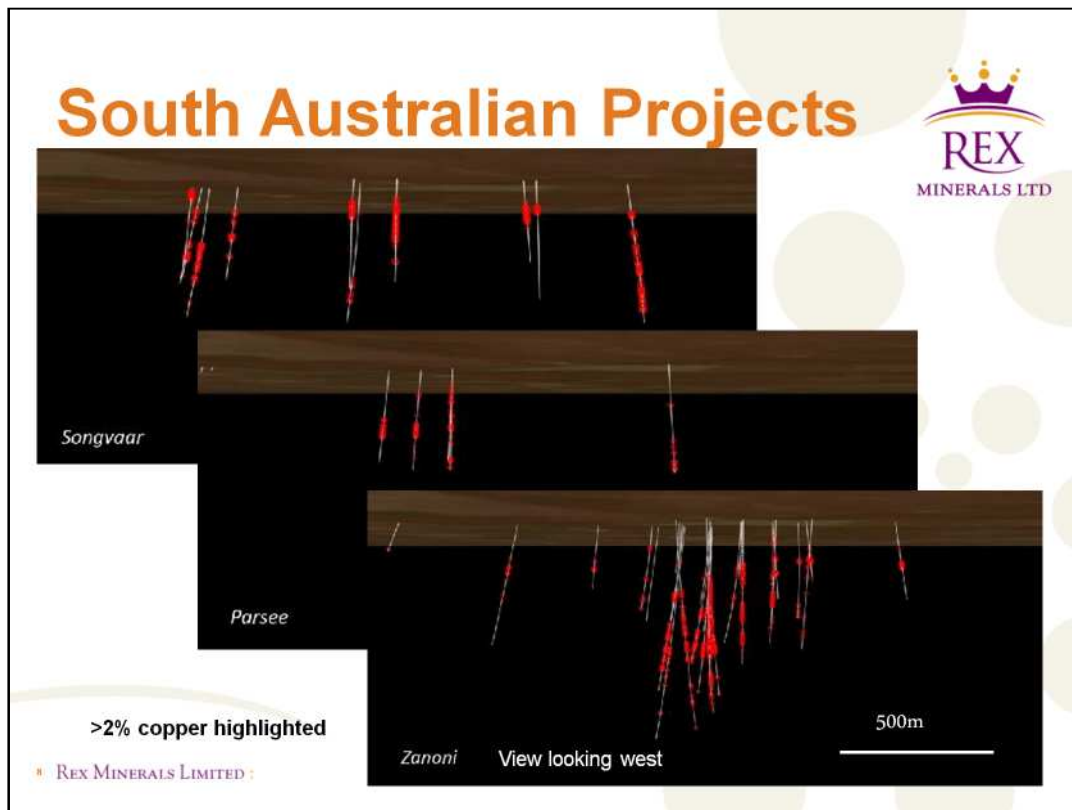
In 2009 Rex made a significant copper discovery at the Hillside Project, which is situated within a two hour drive of Adelaide on the Yorke Peninsula. The Hillside Project is one of many targets that exist along 60km of the Pine Point Copper Belt, which lies close to the eastern coastline of the Yorke Peninsula.

At Hillside Rex has discovered copper mineralisation on three separate closely spaced parallel structures, the Zanoni, Parsee and Songvaar. These structures are broadly defined by a magnetic anomaly that has been defined over an area that is 2km long and 500m wide.



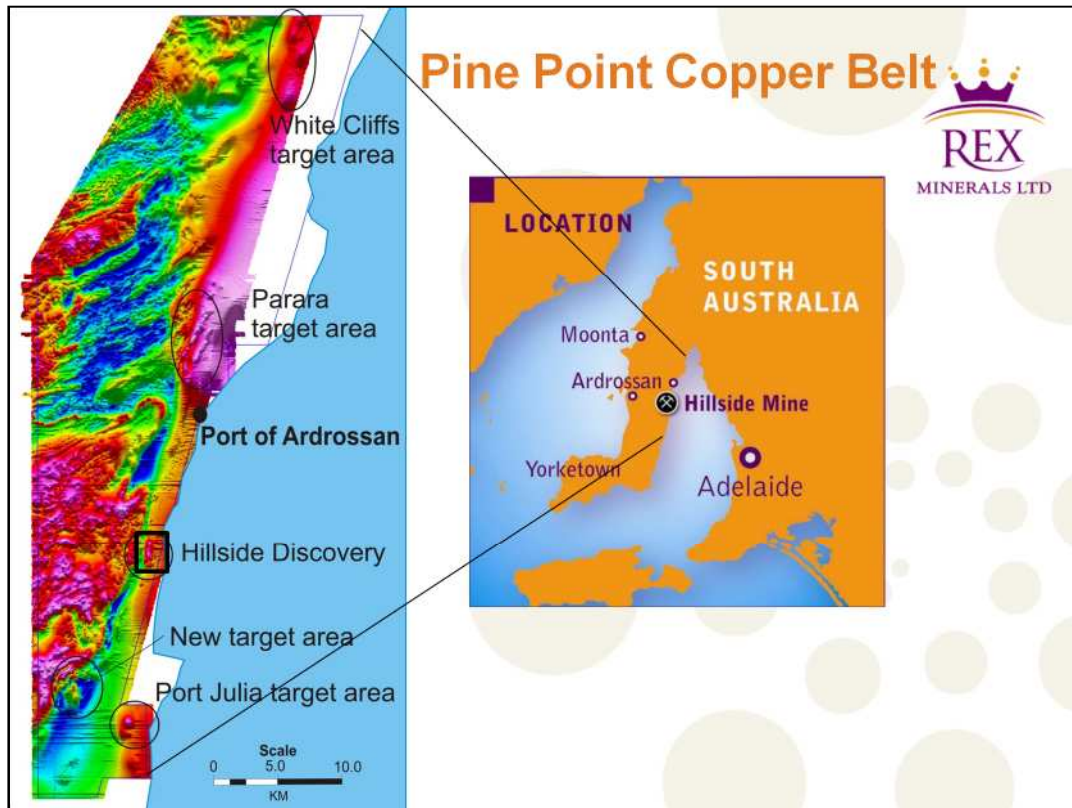
South Australian Projects Movie Presentation – can be downloaded separately from the Rex Minerals website www.rexminerals.com.au

Drilling at Hillside by Rex has defined extensive copper mineralisation associated with this magnetic anomaly. Over 60 drill holes have been completed to date at Hillside, with all drill holes targeted on the magnetic anomaly intersecting significant copper mineralisation, as shown above. The copper has been discovered from 10 metres beneath the surface to a depth of over 500m.



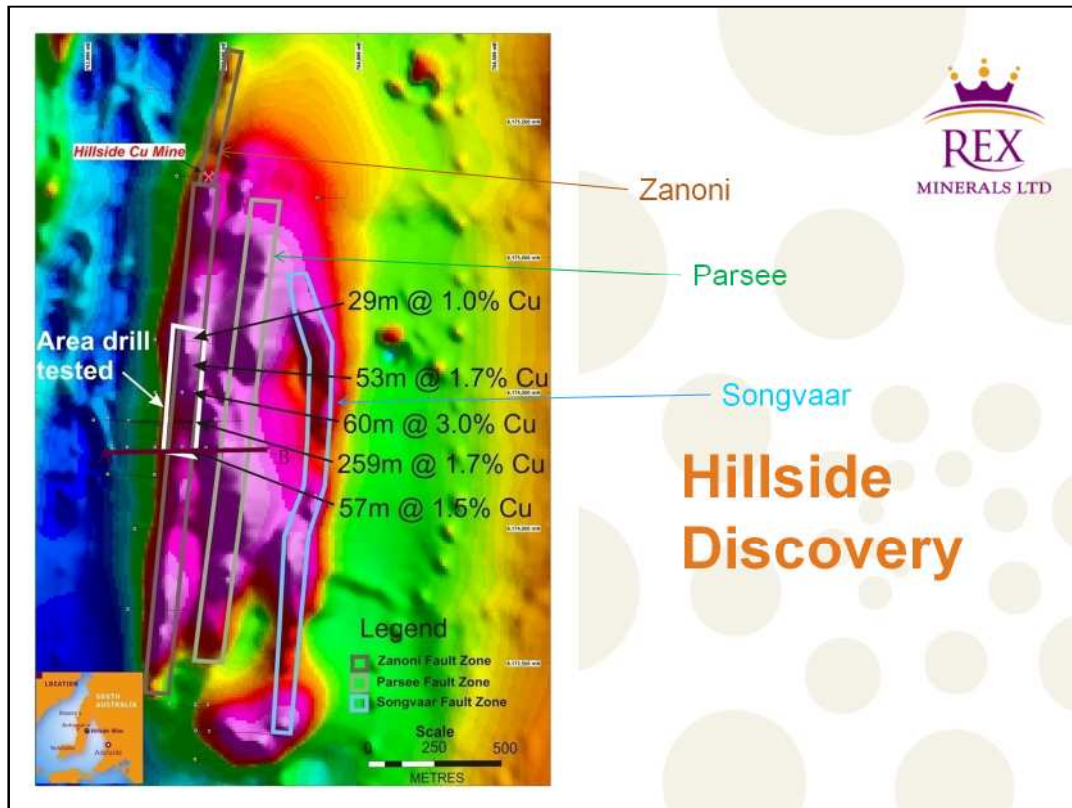
South Australian Projects Movie Presentation – can be downloaded separately from the Rex Minerals website www.rexminerals.com.au

Rex considers that substantial area's remain to be tested on all three structures defined at Hillside. Rex intends to define the copper on each structure in more detail as the Company works towards its maiden Resource estimate at Hillside in 2010.



Following the successful definition of magnetite-rich zones containing copper mineralisation from a detailed magnetic survey at Hillside (announced 24 August, 2009) a high resolution regional magnetic survey was completed over the entire Pine Point Copper Belt. The results from this survey (shown above) have identified a number of linear magnetic features of variable size, including many that are much larger than the Hillside magnetic anomaly. Drill testing will be conducted to identify which of these features are related to copper mineralisation. Some of the larger magnetic anomalies including the Parara and White Cliffs target areas occur in close proximity to high grade historical copper mines similar to the Hillside Project.

Rex's licence holding extends for over 60km along the Pine Point Copper Belt. The exploration effort in South Australia is aimed at finding multiple large scale copper-gold deposits on the Yorke Peninsula.

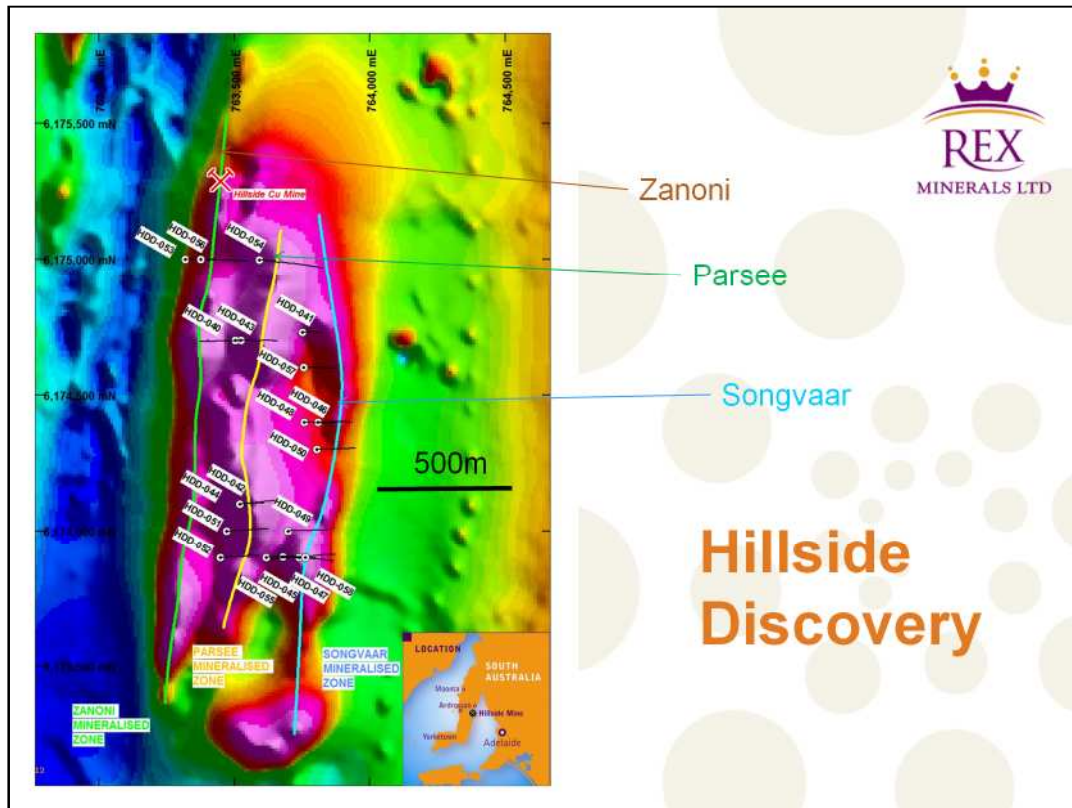


In August 2009 Rex announced the results from a new high resolution magnetic survey over the Hillside Project. The results from this magnetic survey (shown above) were particularly significant in revealing three major features that are interpreted to be three continuous magnetic zones known as Zanoni, Parsee and Songvaar. The early high grade copper results completed at Hillside are interpreted to be related to the Zanoni magnetic zone, which is the western magnetic feature.

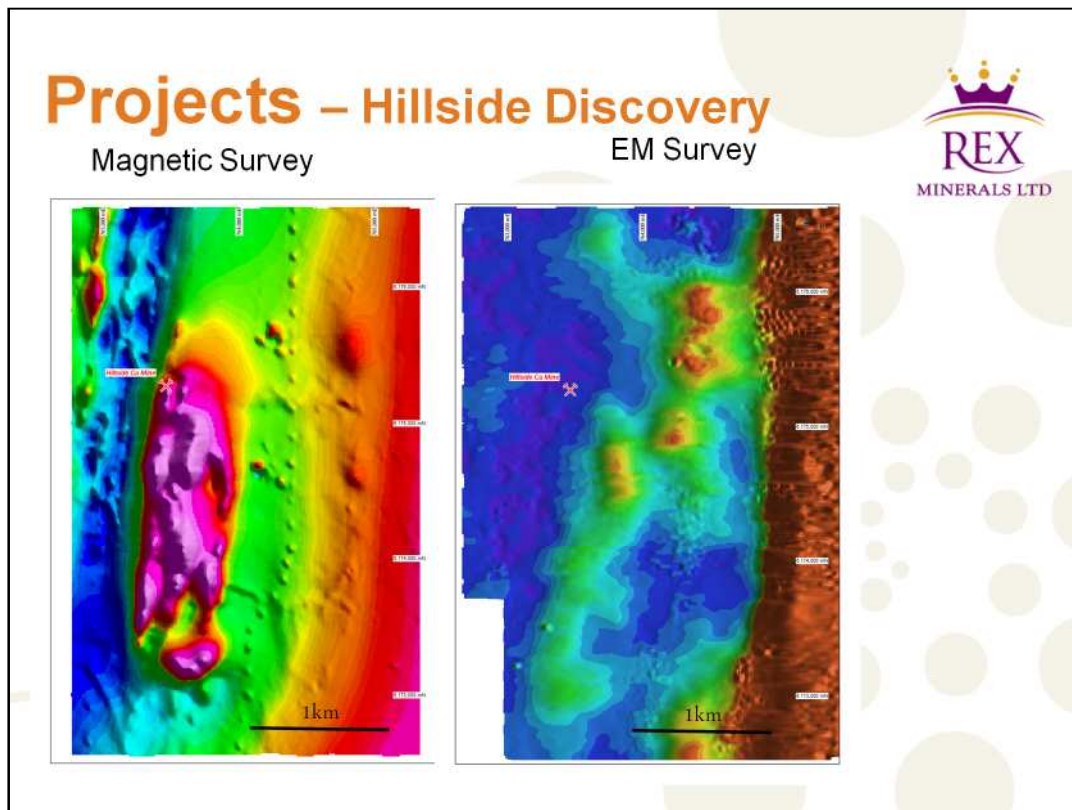
Hillside - Drill Core



The high grade copper mineralisation at Hillside is dominated by the copper mineral chalcopyrite which is typically found in associated with magnetite and pyrite as seen above. This mineralisation appears to be controlled by near vertical structures which contain sections of high grade copper mineralisation at certain favourable locations.

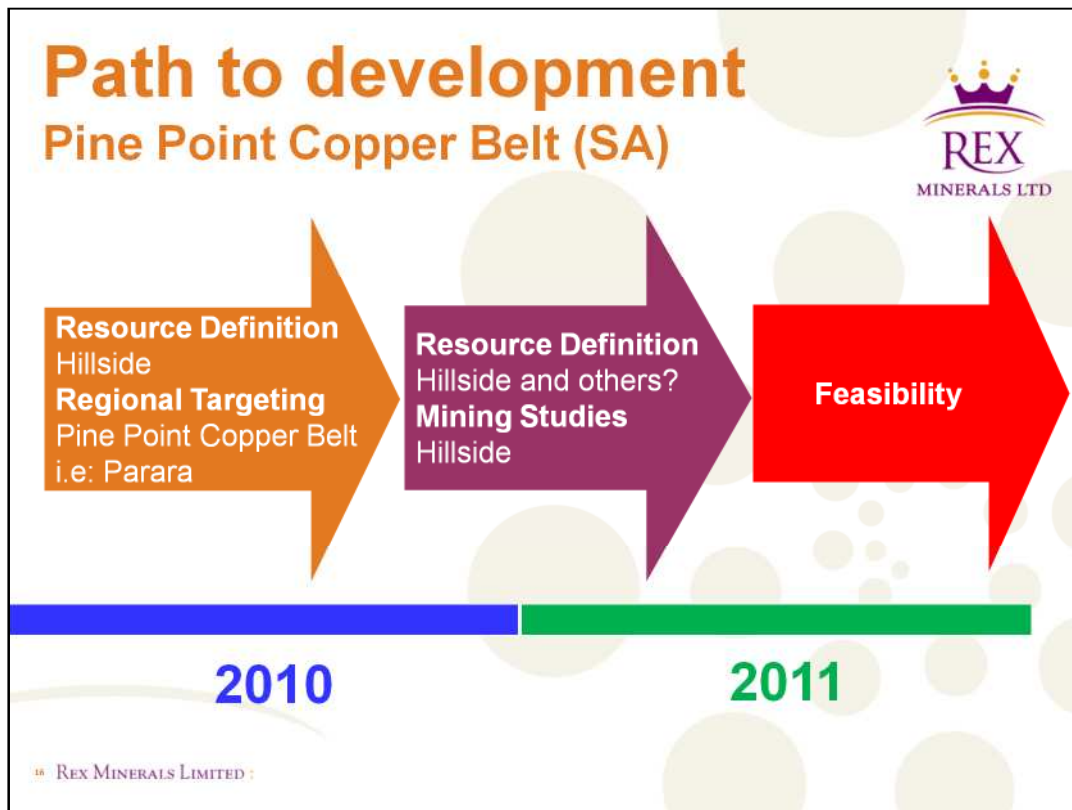


Diamond drilling during the last quarter of 2009 has revealed extensive copper mineralisation across all of the major magnetic features identified at Hillside. This has confirmed the potential for extensive high tonnage copper mineralisation at Hillside, including the identification of significant copper and gold mineralisation from as shallow as 10m beneath the surface.



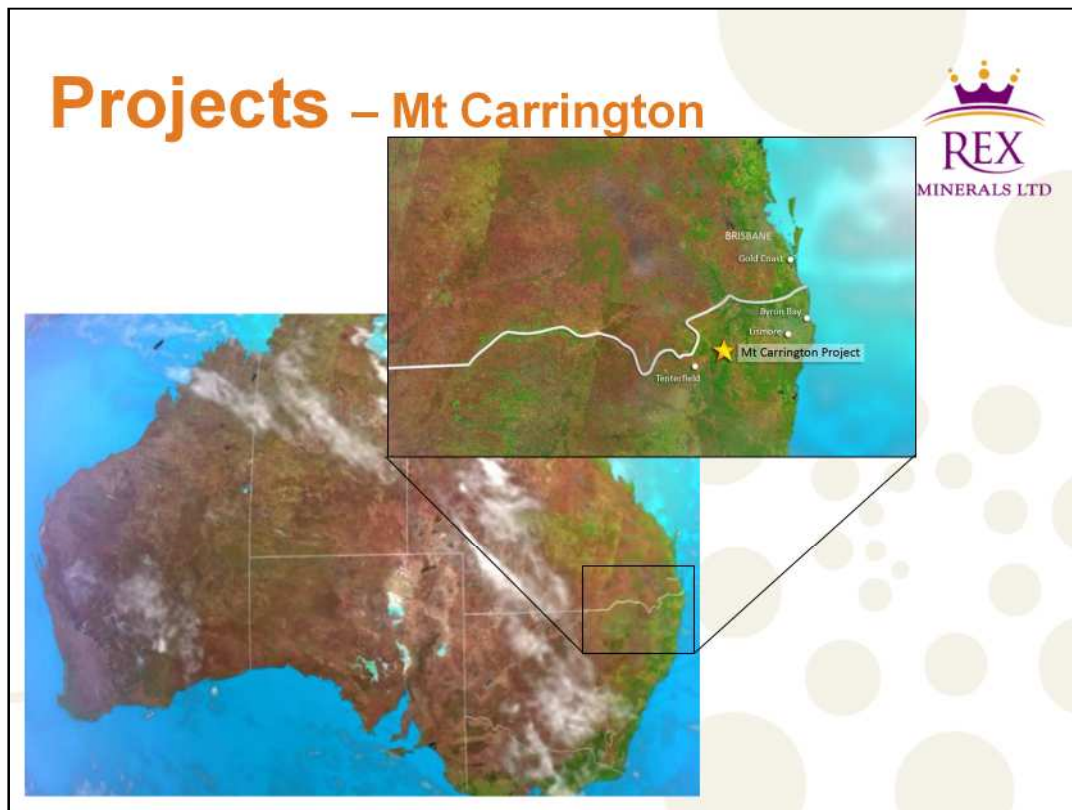
Rex has also commenced drill testing of a geophysical electromagnetic (EM) anomaly which was defined from the recently completed survey at Hillside (image on right). The first drill hole (HDD039) intersected a sequence of deeply weathered rocks containing a range of secondary copper minerals including native copper, atacamite and chalcocite.

The large thickness and shallow depth of this secondary copper mineralisation, combined with the size of the EM anomalies indicates that significant near-surface supergene copper zones could exist at the Hillside project and Rex will investigate this with further drilling in tandem with the current program focussed on the primary copper zones. The presence of secondary copper mineralisation near the surface in close proximity to a large primary copper deposit has been reported previously on the Yorke Peninsula at the historical Moonta/Wallaroo copper deposits. Other large copper deposits, such as the Ernest Henry copper deposit in Qld, also show similar primary and secondary mineralisation with an EM anomaly associated with native copper mineralisation.



Rex has moved forward from the discovery stage to the Resource definition stage with two key projects. As the Resources are more clearly defined, Rex will rapidly progress each project towards a feasibility study.

On the Pine Point Copper Belt Rex is looking to gain economies of scale in combination with the obvious competitive advantage of being located close to existing port facilities to find the best possible outcome on its projects. The exploration effort in South Australia is dedicated to defining additional copper mineralisation that can ultimately show that a large scale and long life copper project exists on the Yorke Peninsula.



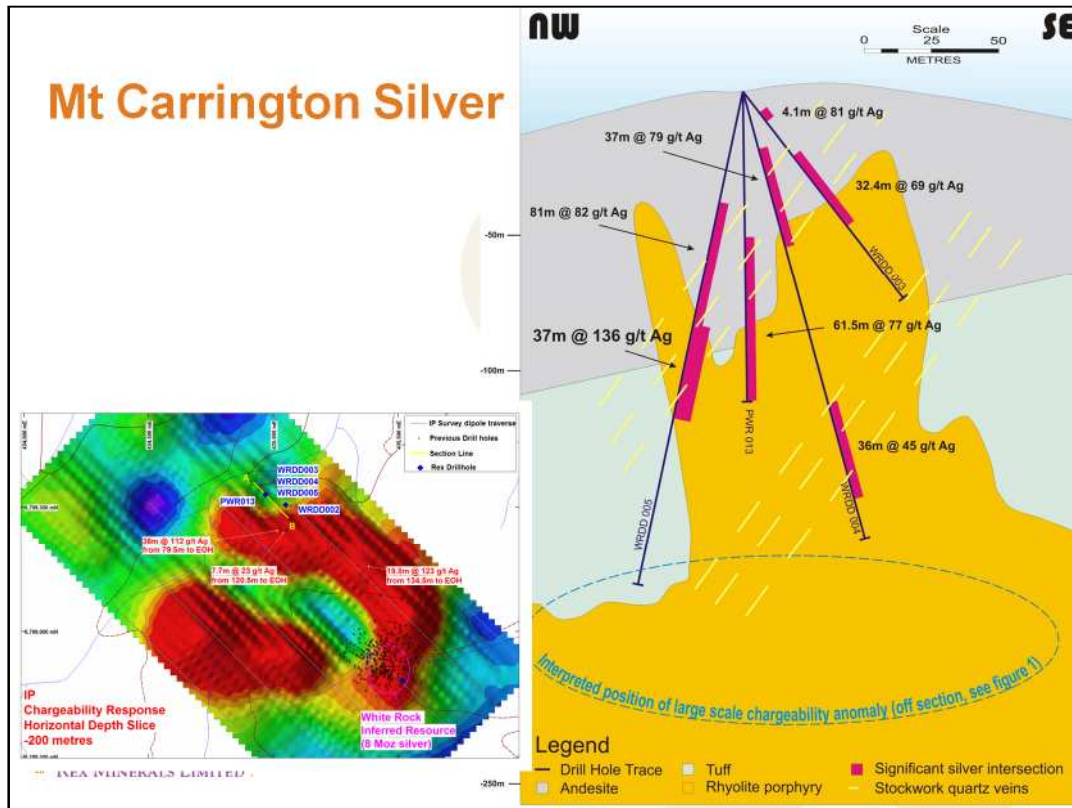
Mt Carrington Project Movie Presentation – can be downloaded separately from the Rex Minerals website www.rexminerals.com.au

The Mt Carrington Project is situated in north-eastern New South Wales and is a 1 hour drive from the major regional township of Lismore. The Project area is centred around the small township of Drake with the main mining licenses located 5km to the north. Infrastructure at Mt Carrington was established by previous mining operations and includes a tailings dam, processing plant site, freshwater dam and access to mains power.

190,000 ounces of shallow gold Resources exists at Mt Carrington including 150,000 ounces of gold situated within the Kylo and Strauss deposits. Most of the gold Resource at Strauss and Kylo start at the surface and extends to a depth of 80 metres.

Silver and Gold Resources also exist at the Lady Hampton deposit which lies 1km to the east. This deposit contains 2 million ounces of silver and 30,000 ounces of gold with extensive silver mineralisation found within the surrounding drill holes.

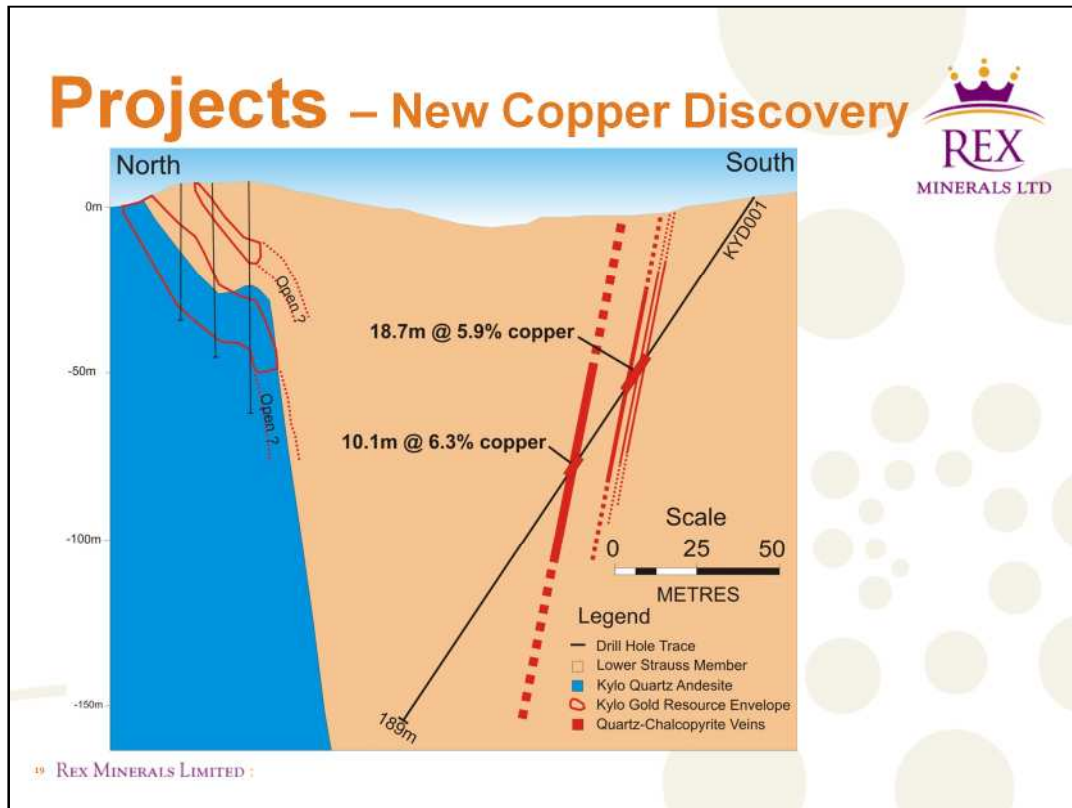
A large scale silver project called White Rock exists 5km west of the main project area at Mt Carrington. White Rock has 8.1 million ounces of silver Resources, with drilling beyond the existing Resource indicating the presence of a much larger silver deposit. Rex is planning to test the extent of the silver at White Rock over a 1 kilometre square area, which if successful, would make the White Rock project one of Australia's largest silver deposits.



The drilling at White Rock North has provided important information on the style and potential extent of the silver mineralisation. All indications to date point to a large and shallow mineralised system existing at White Rock North, with good potential to define substantial extensions to the mineralisation both laterally and at depth.

Geological comparisons with similar porphyry-related gold-silver-copper mineralisation at White Rock indicates that the silver mineralisation has formed at elevated levels in the hydrothermal system and good potential exists to define gold – copper mineralisation at deeper levels both within and marginal to the porphyritic intrusion defined. The geological setting of the White Rock prospect bears a number of similarities to the Cadia – Ridgeway gold-copper deposits in the Lachlan Fold Belt in central NSW.

The induced polarisation (IP) anomaly that has been identified recently at White Rock (left hand figure) is interpreted to be the result of a high concentration of sulphide minerals on the margins of a large porphyry intrusion. Various sulphide minerals at Mt Carrington are typically associated with the gold, silver and copper mineralisation. The shape and location of the IP anomaly combined with the rock types identified in the recent drilling program are all consistent with there being a large mineralised porphyry intrusion at approximately 200m beneath the surface at White Rock.



A shallow and high grade copper discovery (18.7m @ 5.9% copper and 10.1m @ 6.3% copper) at Mt Carrington has the potential to add significant value to the existing gold and silver Resources. This intersection exists within a corridor of known copper anomalism, including a large area of historical copper mine workings and supergene copper mineralisation situated 600m south of this drill intersection. Rex will further test this structure to define the extent of the copper mineralisation.

Conclusion



- Rex has 100% ownership of two outstanding copper projects.
- Rex has right experience, capital structure and cash to deliver the next phase of its growth.
- At Pine Point Copper Belt Rex is focussing on additional copper discoveries and Resource definition with the aim of identifying a large-scale, low cost and long life mining operation.
- At Mt Carrington Rex is looking to make a new copper and/or gold discovery which could substantially improve the development options there.

20 REX MINERALS LIMITED :

To sum up, Rex has made some exciting new copper discoveries in both South Australia and New South Wales.

In South Australia, Rex has intersected thick and high-grade copper which appears to be associated with a very large mineralised system. Rex believes that the best strategy here is to broadly quantify the size and scale of the copper, gold and uranium that exists on the Yorke Peninsula before narrowing the focus with the aim of delivering a new large scale and long life mining opportunity.

At Mt Carrington in New South Wales, Rex has made a new shallow and high grade copper discovery which compliments the existing shallow gold and silver Resources. This copper discovery could add significant value to the development options at Mt Carrington and the next 12 months will see some follow-up drilling for the copper, gold and silver potential there.



ASX code: RXM

Contact Us

Steven Olsen

Website: www.rexminerals.com.au

Email: info@rexminerals.com.au

Phone: 03 53374000

© REX MINERALS LIMITED