



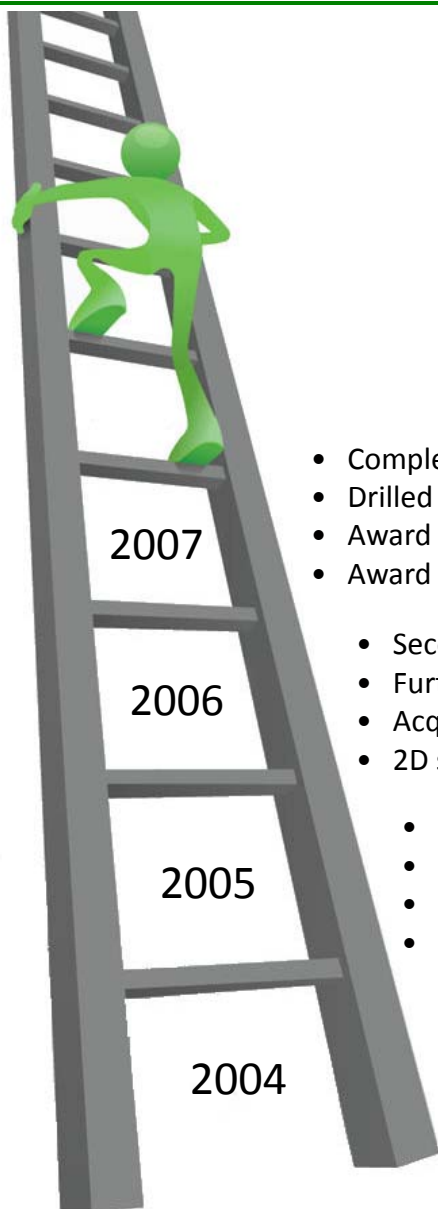
Australasian Energy Pacesetters 2010

Paul G Senyica
Exploration Manager

Disclaimer

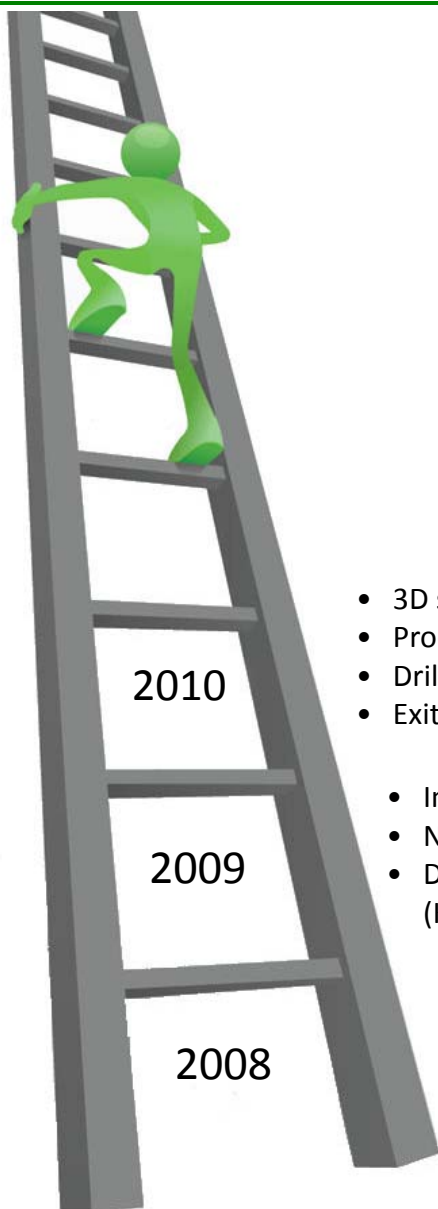
- This presentation does not constitute an offer to sell securities and is not a solicitation of an offer to buy securities. It is not to be distributed to third parties without the consent of Otto Energy Ltd (the “Company”).
- This presentation contains forward-looking statements that are not based on historical fact, including those identified by the use of forward-looking terminology such as statements containing the words “believes”, “may”, “will”, “estimates”, “continue”, “anticipates”, “intends”, “expects”, “should”, or the negatives thereof and words of similar import.
- Management of the Company cautions that these forward-looking statements are subject to risks and uncertainties that could cause actual events or results to differ materially from those expressed or implied by the statements. Management believes that the estimates are reasonable, but should not unduly be relied upon.
- The Company makes no representation, warranty (express or implied), or assurance as to the completeness or accuracy of these projections and, accordingly, expresses no opinion or any other form of assurance regarding them. Management does not intend to publish updates or revisions of any forward-looking statements included in this document to reflect the Company’s circumstances after the date hereof or to reflect subsequent market analysis.
- The hydrocarbon reserve and resource estimates are based on information compiled by Mr Craig Martin. Mr Martin has more than 20 years of relevant experience and is qualified in accordance with ASX Listing Rule 5.11. Mr Martin is a full time employee of Otto Energy as its Chief Operating Officer and has consented to the inclusion in the presentation of the information in the form and context in which it appears.

Otto's steps to success



- Completed Galoc development – commenced production
 - Drilled 4 wells in Turkey
 - Award of Santa Rosa, Argentina
 - Award of SC69, Philippines
-
- Second discovery in Turkey: Arpaci
 - Further 2D seismic in Turkey
 - Acquired 100% of NorAsian
 - 2D seismic in SC55 over Marantao
-
- 2D seismic in Turkey
 - Acquired 50% of NorAsian (entering SC50, 51 & 55), Philippines
 - Farmed in Santa Rosa block, Argentina
 - Drilled first well in Turkey (discovery Bati Umur)
-
- Farmed in 3 licences on shore: Thrace Basin, Turkey (80%)
 - Listed 20 December 2004 as Ottoman Energy (OEL)

Otto's steps to success



- 3D seismic in SC 55 – 600 km² and 1,800 km²
- Produced 5 million barrels from Galoc oil field
- Drilled 7 further discovery wells in Turkey
- Exited Italy

- 2D seismic in SC69 – 900 km
- First gas for Turkey achieved in April 2010
- SC55 contract extension by 880 km²

- Increased interest in Galoc field by 0.49%
- New CEO and CFO appointed
- Drilled 3 successful wells in Turkey (Kirmizihoyuk-1, Ikihooyuk-2, Kuzey Ikihooyuk-1)

- Drilled dry wells in Argentina and Italy – exited Argentina

- Completed Galoc development – commenced production
- Drilled 4 wells in Turkey
- Award of Santa Rosa, Argentina
- Award of SC69, Philippines



	Details
Galoc Oil Field Philippines	<ul style="list-style-type: none"> • 18.78% indirect interest • First Oil - October 2008 • 5.1 million bbls (gross) produced to date • Current production rate ~8,500 bopd • Phase 2 development evaluation ongoing
Edirne Gas Project, Turkey	<ul style="list-style-type: none"> • 35% interest • Otto's second producing asset start-up 8 April 2010 • Produced 655 Mscf gross in 2Q 2010 • Exploration targeting additional volumes for gas plant • Ongoing development activity in permit
Philippines Exploration	<ul style="list-style-type: none"> • Large and highly prospective acreage-> 20,000km² • High working interest 70-85% • SC55 – 600 + 1,800km² 3D seismic programs completed • Seismic acquisition & farm in option agreement • SC69 – 900km of 2D seismic completed

Board and Management



DIRECTOR
RUFINO BOMASANG
BSc (Min. Eng), MBE



DIRECTOR
JAAP POLL
BSc, MSc and PhD Geology



CHAIRMAN
RICK CRABB
BJuris (Hons), LLB, MBA



DIRECTOR
IAN MACLIVER
B.Com, CA, F Fin, MAICD



DIRECTOR
JOHN JETTER
LLB and BEc, INSEAD



COO
CRAIG MARTIN
BSc (Hons) Geology MBA
Grad Dip Pet Engineering



CEO
PAUL MOORE
BSc (Hons) Eng, MBA
C.Eng FIMMM, FAICD
SPE member



CFO
MATT ALLEN
B.Bus, CA, F.Fin

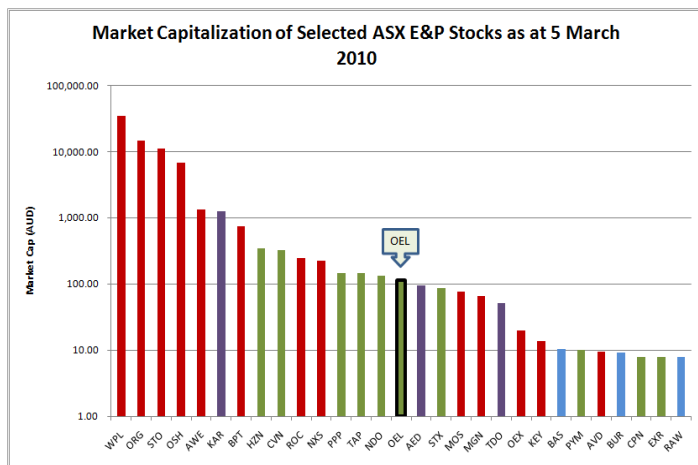
Capital Structure

Fully paid ordinary shares	1,134.5m
Unlisted options ¹	54.75m
Market capitalisation ²	\$97m
Cash (at 30 June 2010)	\$24.4m
Debt (at 30 June 2010)	Nil

Shareholders

Molton Holdings	21.3%
Santo Holdings	21.3%
Directors	5.6%
Shareholders	~3,720

Price Volume History

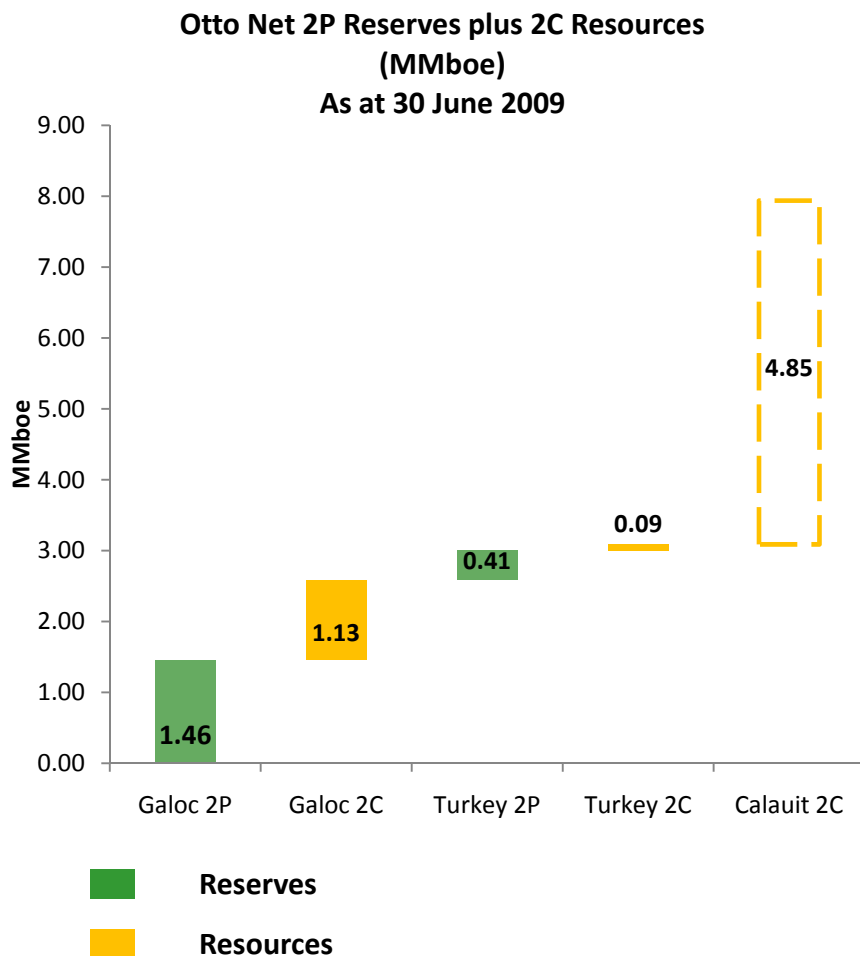


Notes

1. Exercisable at prices between 12 and 60 cents per share.
2. Undiluted at 8.5 cents per share at 23 July 2010



Developing Reserves And Resources



Prospect And Lead Inventory

Licence	Working Interest	Area (km ²)	Prospects/ Leads
Philippines			
SC14C (Galoc)	18.78% ¹	163	3
SC50 (Calait)	85%	1,280	8
SC51	80%	3,320	11
SC55	85%	9,880	16
SC69	70%	7,040	12
Turkey			
Edirne	35%	481	13

Notes

1. Economic interest

Galoc Oil Field – Production Performance

Interest

- 18.8% indirect interest in Galoc Oil Project
- Held through 31.4% shareholding in GPC
- Operator - Galoc Production Company (GPC)

Production

- Current rate ~8,500 bopd (gross)
- Uptime has improved to 100% in June 2010 quarter

Revenue

- Last cargo sold US\$80/bbl (May 2010)

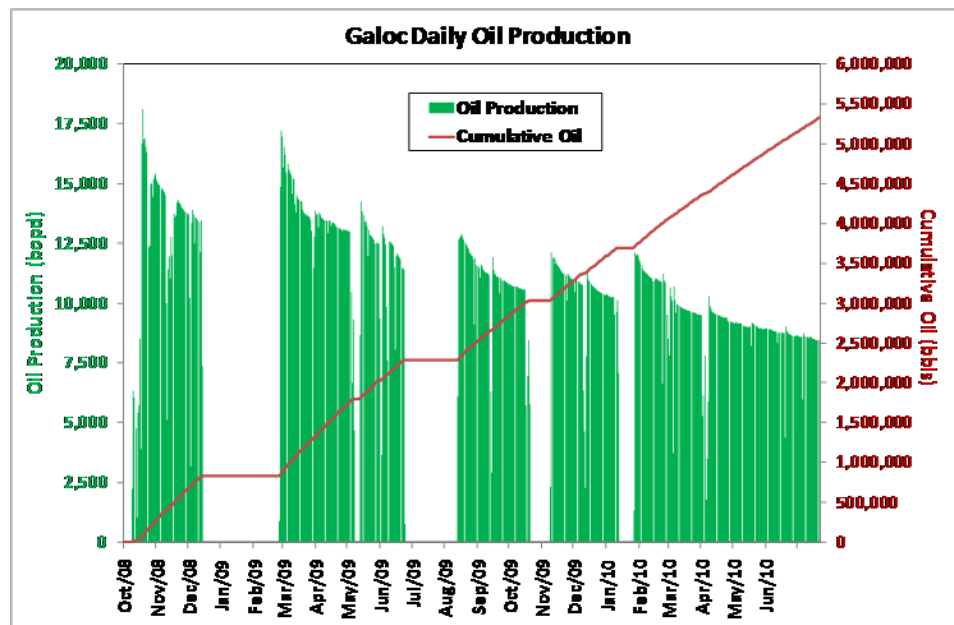
Costs

- Opex US\$16/bbl
- Phase 1 Capex US\$13/bbl

Phase 2

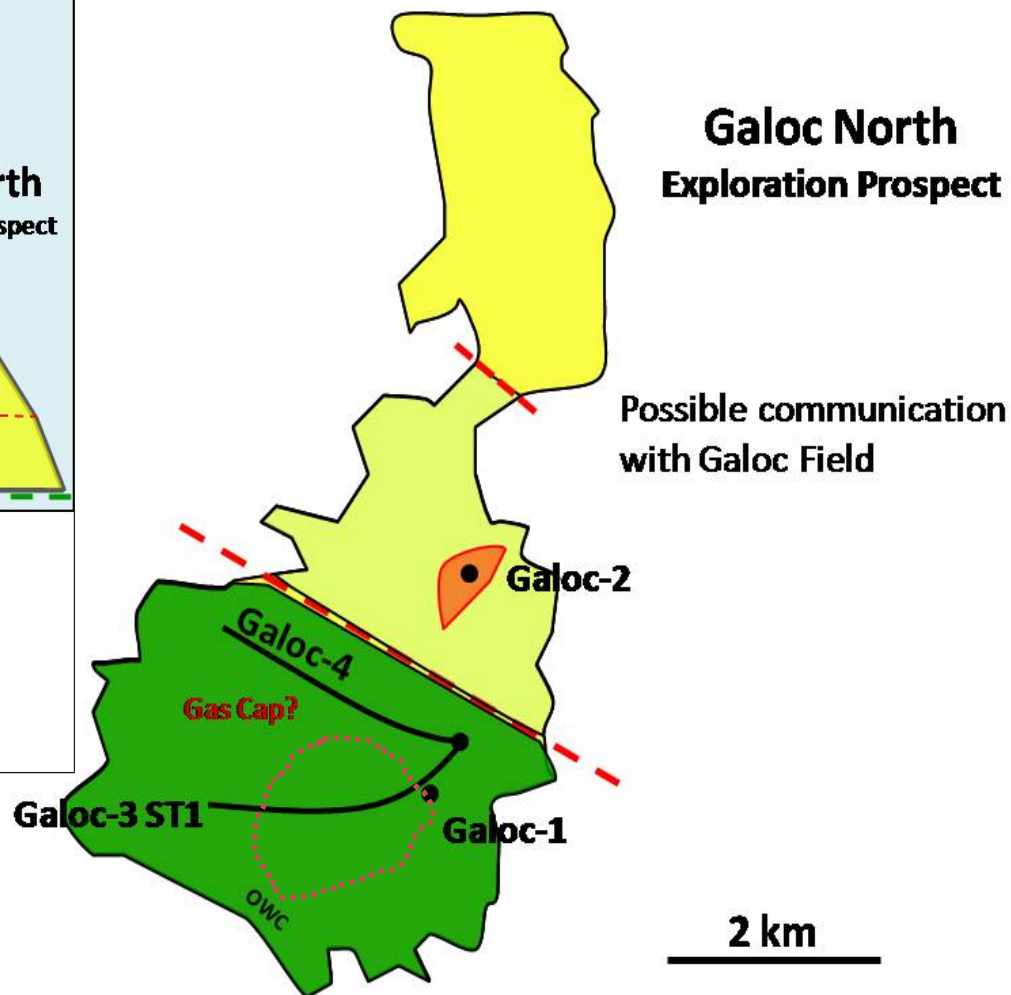
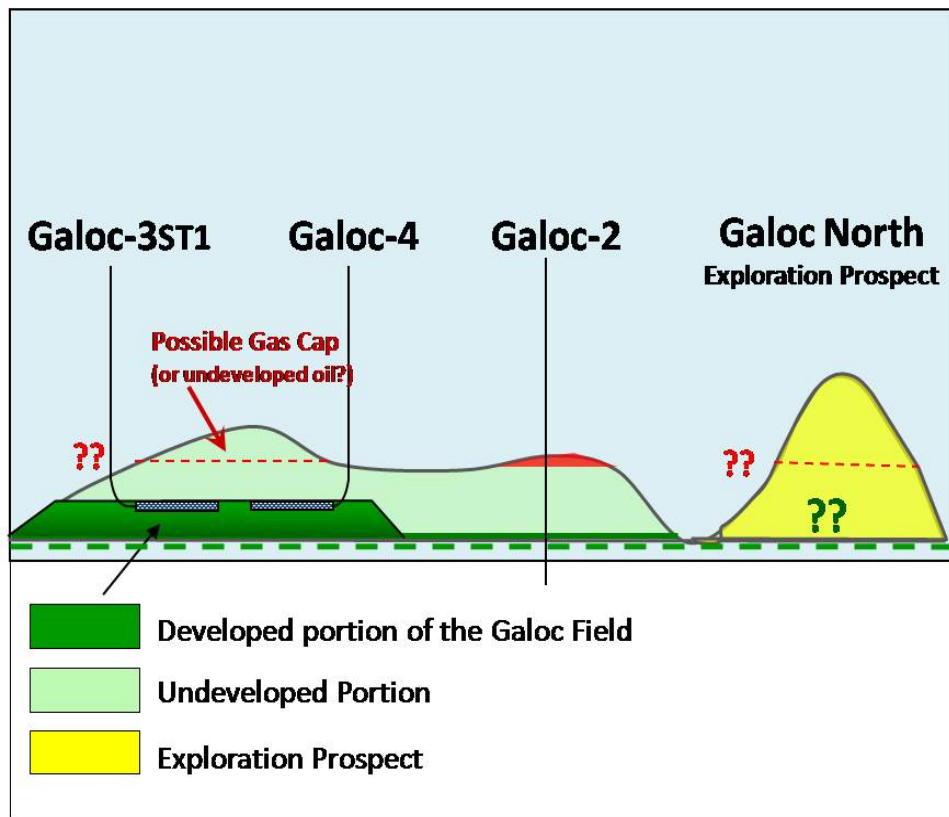
- Phase 2 evaluation ongoing
- Potentially involves 1 or 2 new wells and mooring system upgrade
- Investment decision expected in 2H 2010

Gross Daily Oil Production



Galoc Oil Field	2Q 2010	1Q 2010
Production (net to Otto)	149,642 bbls	144,102 bbls
Liftings (net to Otto)	192,902 bbls	121,646 bbls
Cash receipts from GPC	US\$5.805m	US\$10.512 m

Galoc Oil Field – Development Options



Technical/Operational

- First sales gas produced 8 April 2010
- Production of 655 Mscf gross in 2Q 2010 (229 Mscf net to Otto)
- Average realised price US\$7.40 per mscf
- Ongoing work programme includes:
 - Additional perforations of existing production wells,
 - Connection into the infrastructure of the recent discoveries, and
 - Likely installation of wellhead compression at several field locations



Phase 2 Exploration/Appraisal drilling

- Seven well drilling campaign ongoing.
- 7 discoveries to date

Edirne Gas Fields	2Q 2010	1Q 2010
Production (net to Otto)	229 Mscf	0 Mscf
Revenue	US\$1.673m	US\$0.0m



Major Upside Potential Across Multiple Licences

Permit	Description	Otto Working Interest
SC55	Deepwater Palawan	85%
SC51	East Visayan basin	80%
SC69	East Visayan basin	70%
SC14C	Galoc block	18.8%
SC50	Calautit NW Palawan	85%

Philippines Permits



Interest

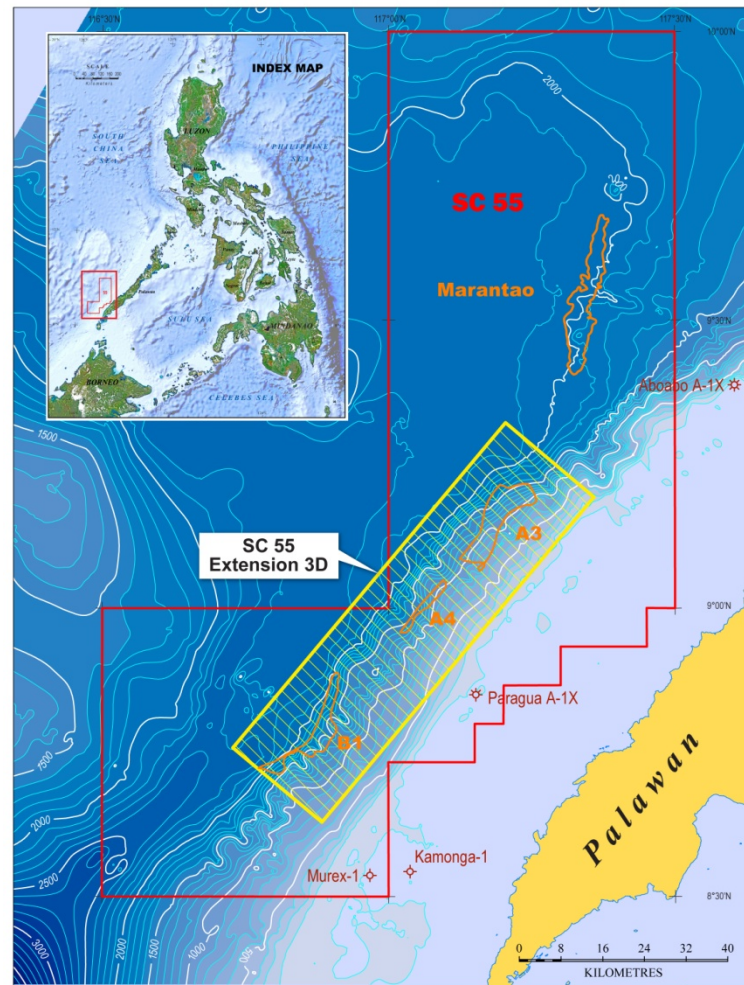
- 85% working interest

Exploration Program

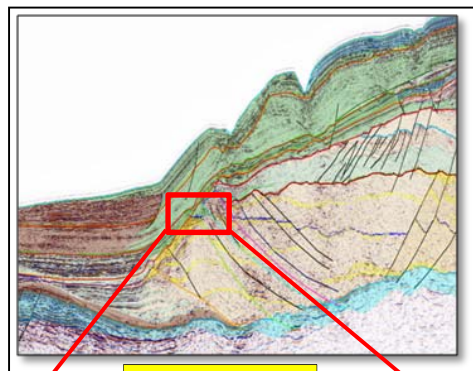
- 600 km² of 3D seismic acquired Jan 2010, over Hawkeye prospect
- Seismic acquisition & farm in option agreement
- 1,800 km² 3D seismic program completed
- Processing and interpretation of both surveys during 2010
- DOE approved revisions to work plan and budget in April 2010



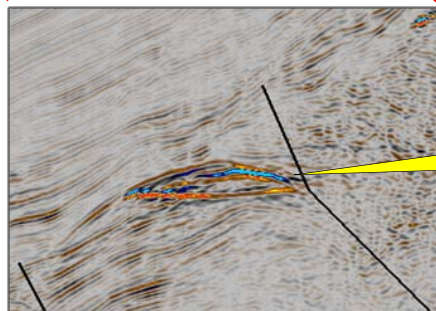
SC55 Prospects And Leads



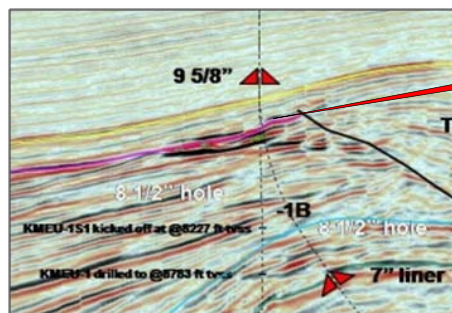
Hawkeye Lead and NW Borneo Trend



Hawkeye



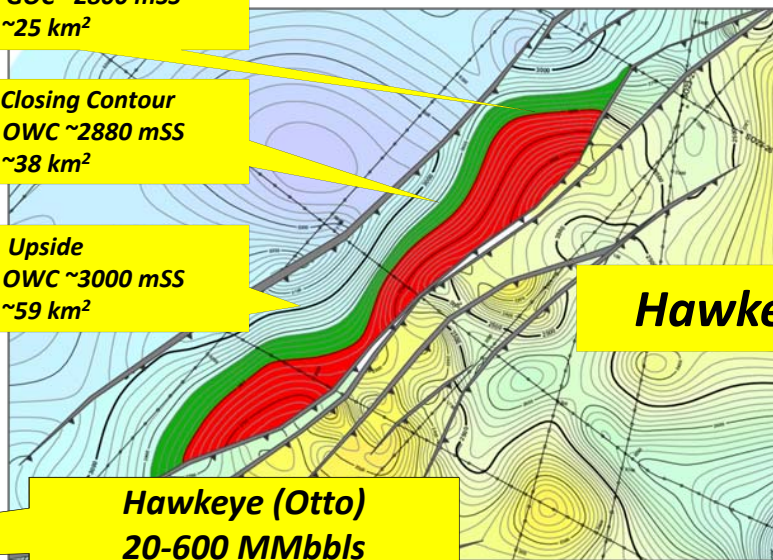
Analogue – Kamansu Field



Possible GOC ~2800 mSS
~25 km²

Lowest Closing Contour
Possible OWC ~2880 mSS
~38 km²

Upside
Possible OWC ~3000 mSS
~59 km²



Hawkeye

Hawkeye (Otto)
20-600 MMbbls
Potential Resource
POS 10%

SC56 (Exxon-Mobil)
Dabakan-1 2009
?Oil Discovery
(DOE Pre-drill 750 MMbbls)

Kerbargan (C-P) 2.2 Tcf

Kamansu (Shell) 2.2 Tcf

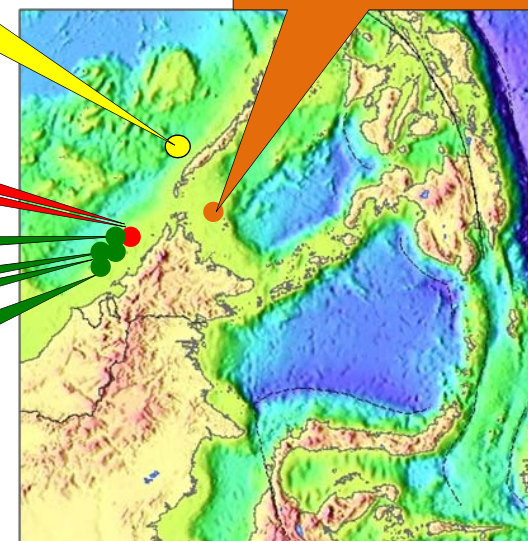
Ubah (Shell) 215 MMboe

Malikai (Shell) 108 MMboe

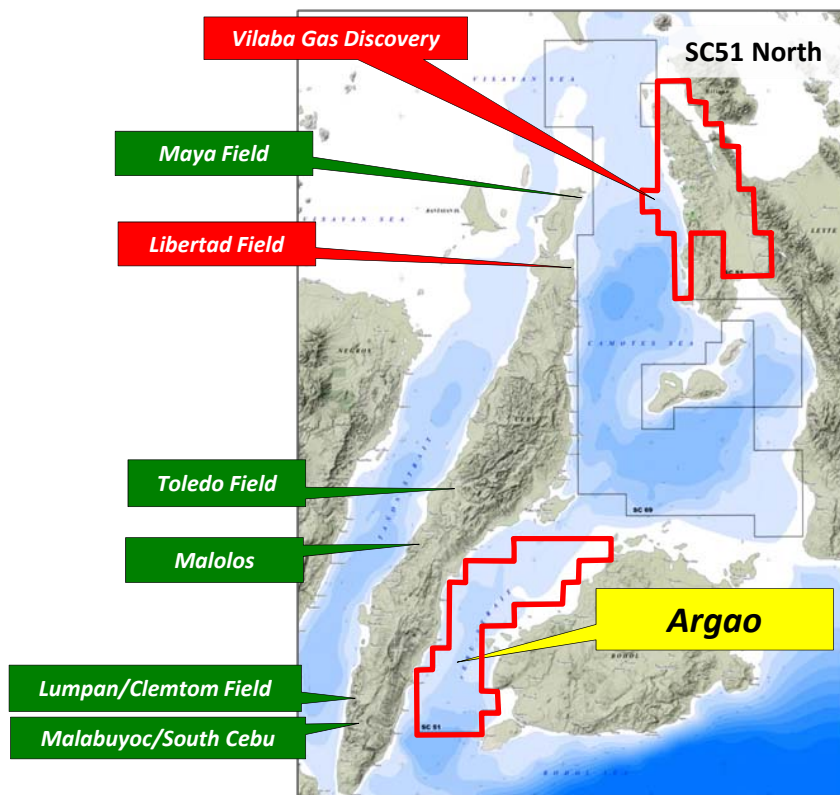
Gumusut/Kakap (Shell) 620 MMboe

Kikeh (Murphy) 536 MMboe

Resource Source: Innovation Norway

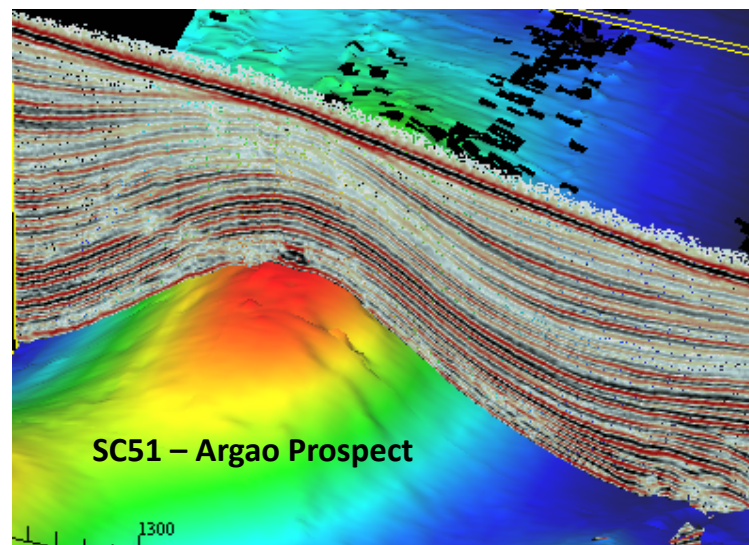


SC51 Prospects and Leads

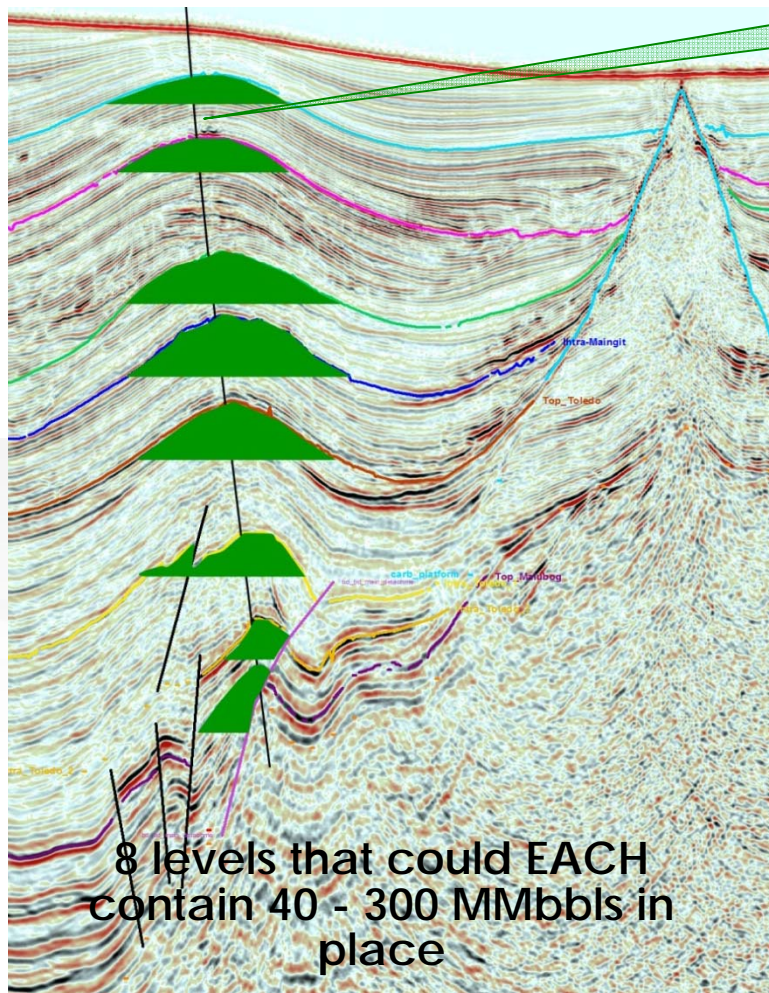


SC51

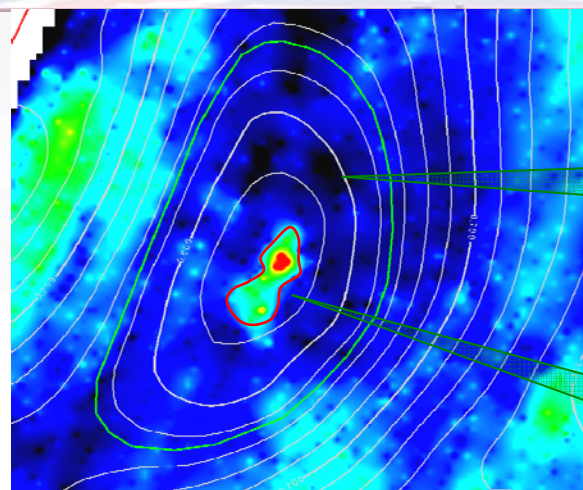
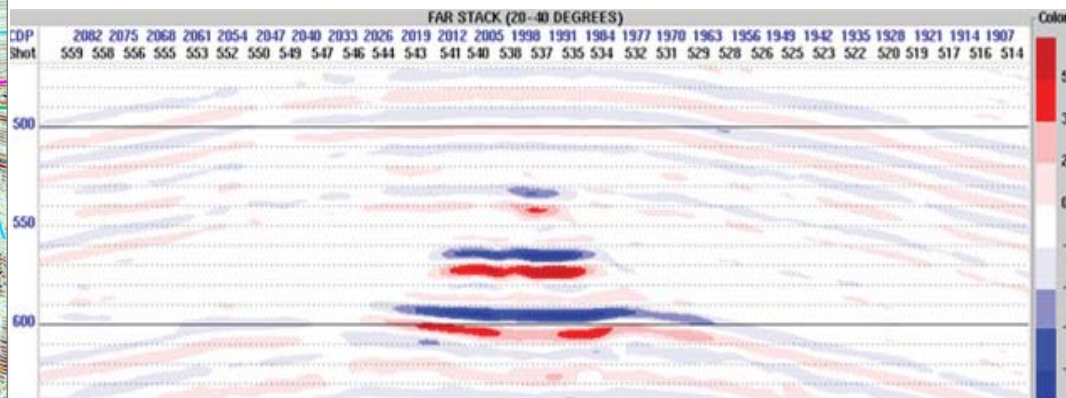
- 80% working interest
- Argao Prospect in 230m water
- 3D recorded in 2007
- Drill-ready prospects
- Targetting 100 mmbbls POS +/- 20%
- Seeking partners for drilling



SC51 South: The Argao Prospect....targeting 100 MMbbls



DHI's Suggest Gas cap



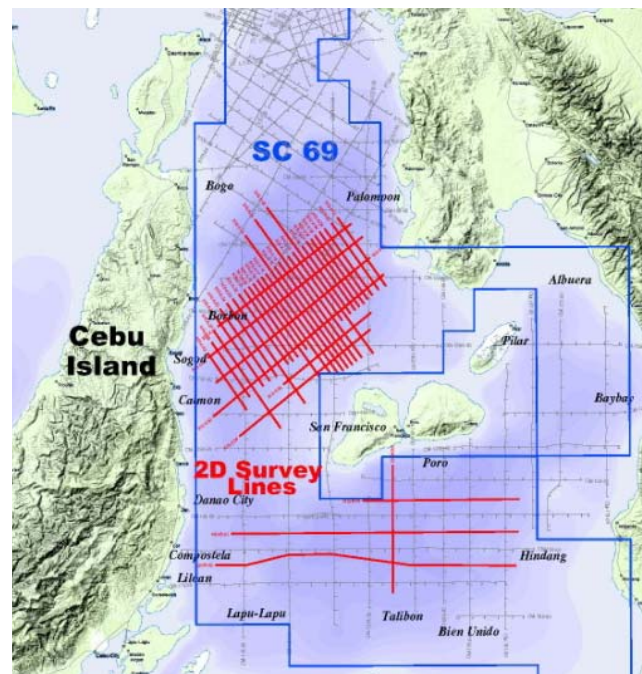
Potential Oil Leg

Gas Cap

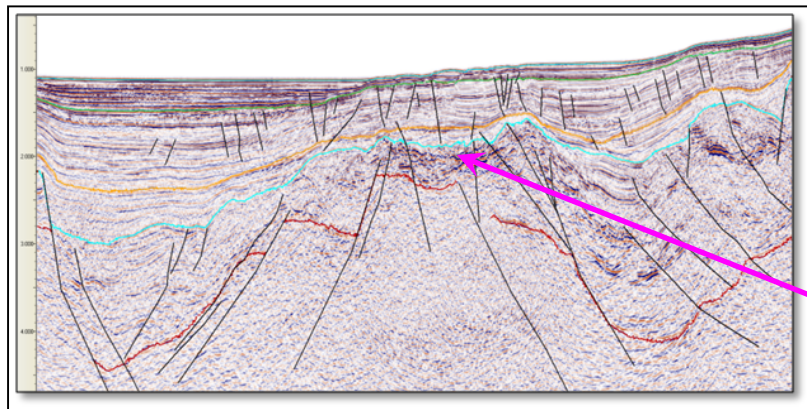
E-W SECTION OVER ARGAO

SC69

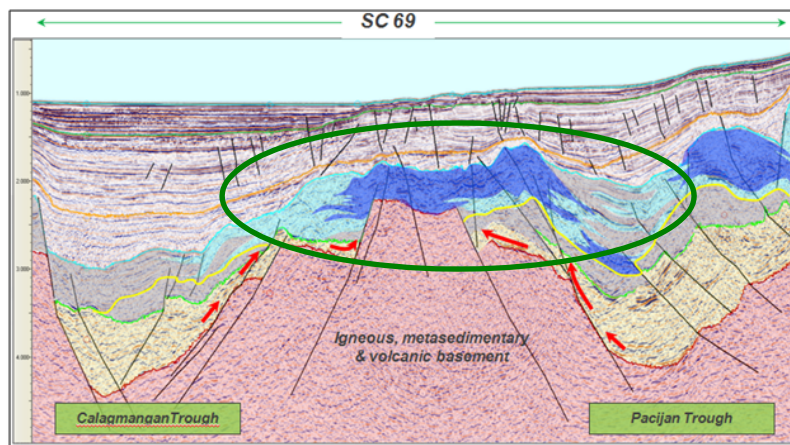
- 70% working interest
- Proven petroleum system
- Large reef structures
- Significant Information, Education and Communication campaign with DOE and local communities
- 2D seismic acquisition (900 line kms) completed Mar 2010
- Numerous leads < 800m water



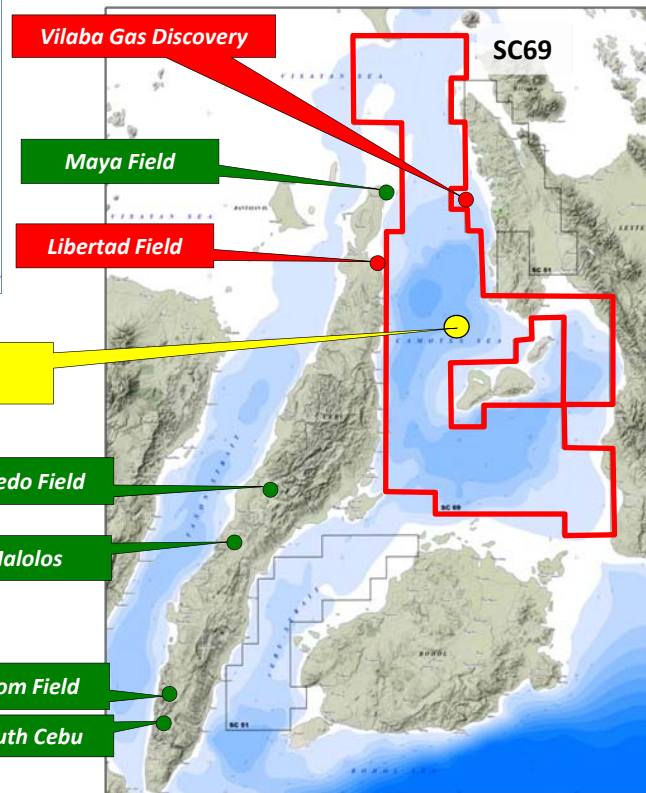
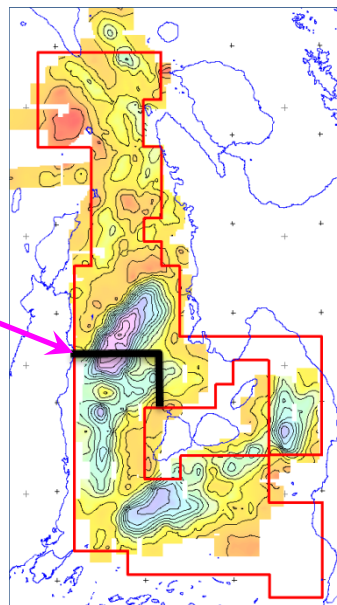
SC69 Numerous Plays in the East Visayan Basin



Lamos



Top Carbonate (Barili)
Depth Structure Map



Production in 2010

- Galoc 0.4 mmbbls (net)
- Turkey ~ 1.3 Bcf (0.23 mmboe) (net)

Development

- Galoc production upgrade
- Commit to Galoc Phase 2

Exploration + static resources

- Turkey Phase 2 exploration
- Philippines farm downs
- Philippines seismic

Forward Activities

	2010			
	Q1	Q2	Q3	Q4
Production - Galoc				
Oil sales				
Facilities upgrade decision			Contingent	
Phase 2 development FID			Contingent	
Facilities upgrade implementation				Contingent
Production - Turkey				
Gas Sales Agreement executed				
Gas Production commenced				
Gas sales				
Seismic Acquisition - Turkey				
3D Seismic				
Seismic Acquisition - Philippines				
SC55 3D				
SC69 2D				
Drilling - Turkey				
Phase 2 (up to 7 exploration wells)				
Drilling - Philippines				
SC 51 (Argao-1)				

Strategic focus:

- **Production:**
 - Maximise value from Galoc oil project
 - Commercial production delivered from Edirne gas project
- **Development:**
 - Explore/appraise in and near field to extend production in Galoc and Edirne projects
 - Consider possible expansion at Edirne project
- **Exploration + Business Development:**
 - Execute Philippine farm-down and exploration program
 - Actively pursue value adding new business opportunities

Characterised by:

- Strong cash-flow from Galoc asset
- Revenue from Edirne gas project
- Exposure to high impact exploration acreage
- Cost effective business with tightened geographic focus.
- Project execution with technical and commercial “bench strength”