

CATALINA RESOURCES INVESTOR PRESENTATION

JANUARY 2026



Catalina
Resources

ASX:CTN

CORPORATE OVERVIEW

\$0.09

SHARE PRICE

\$11M

MARKET CAPITALISATION

124,487,243

SHARES ON ISSUE

ASX:CTN

COMPANY TICKER

~\$3.4M

CASH AT BANK

\$7.6M

ENTERPRISE VALUE (EV)

63,086,921

UNLISTED OPT. ON ISSUE

\$0.115 exp 22/05/27

UNLISTED OPT. TERMS



KARL SIMICH

NON-EXECUTIVE CHAIRMAN

Karl Simich is a mining executive with over 40 years' experience in corporate finance and international resource company leadership.

He was the founder of Sandfire Resources (ASX: SFR), where he led the discovery, development and operation of the high-grade DeGrussa Copper-Gold Mine in Western Australia.

Karl is a Fellow of the Institute of Chartered Accountants and the Financial Services Institute of Australasia.



ROSS COTTON

EXECUTIVE DIRECTOR

Ross Cotton is an experienced corporate executive with more than 20 years in the resources sector, specialising in project development, corporate finance, and capital markets.

He has held executive and board roles across a range of ASX-listed companies, with a focus on identifying and advancing exploration assets, building high-performing teams, and securing funding to support growth.



JADE SMITH

EXECUTIVE DIRECTOR

Jade Smith is an accomplished and respected leader in business transformation and optimisation, bringing more than 20 years of executive and consulting experience across government, health, education and resources.

He has a strong record of delivering large-scale programs of work in complex operational environments.

ASSET PORTFOLIO

WEST AUSTRALIAN BASED GOLD, SILVER AND BASE-METAL EXPLORER WITH EXPOSURE TO PROVEN GOLD DISTRICTS AND COPPER-DOMINANT VMS SYSTEMS

1. Central Yilgarn Project

Large-scale, underexplored greenstone belt position with multi-commodity upside

Located within an **underexplored** region of the Yilgarn Craton, the Central Yilgarn Project covers over **650 km²** and approximately **65 km of strike** across the Yerilgee and Evanston greenstone belts. The tenements present a **multi-commodity exploration opportunity** with proven gold mineralisation and potential for lithium and Cu-Zn-Ag massive sulphides.

2. Breakaway Dam

Drill-ready copper-dominant VMS system with defined sulphide continuity

Located within the Alexandra Bore Greenstone Belt, the Project is a **confirmed, copper-dominant VMS system**. Exploration to date has identified **substantial sulphide horizons** and multiple high-priority EM targets. Mineralisation has been defined over approximately **700 m of strike, with the system remaining open**.

3 Beasley Creek

Early-stage gold opportunity in a proven Pilbara district with priority targets defined

Located on the northern flank of the Rocklea Dome in the Pilbara Craton, within a **proven gold district** that includes the former Paulsens Gold Operation (now BlackCat). The Project covers a **geologically prospective and underexplored** area, with **multiple priority targets identified**.

4. Mid-West (Auric North)

District-scale gold consolidation play

The **recently acquired** Auric North portfolio covers approximately 413 km² and is positioned within a **highly prospective Archean gold province** and an established mining district.



CENTRAL YILGARN

PROJECT OVERVIEW

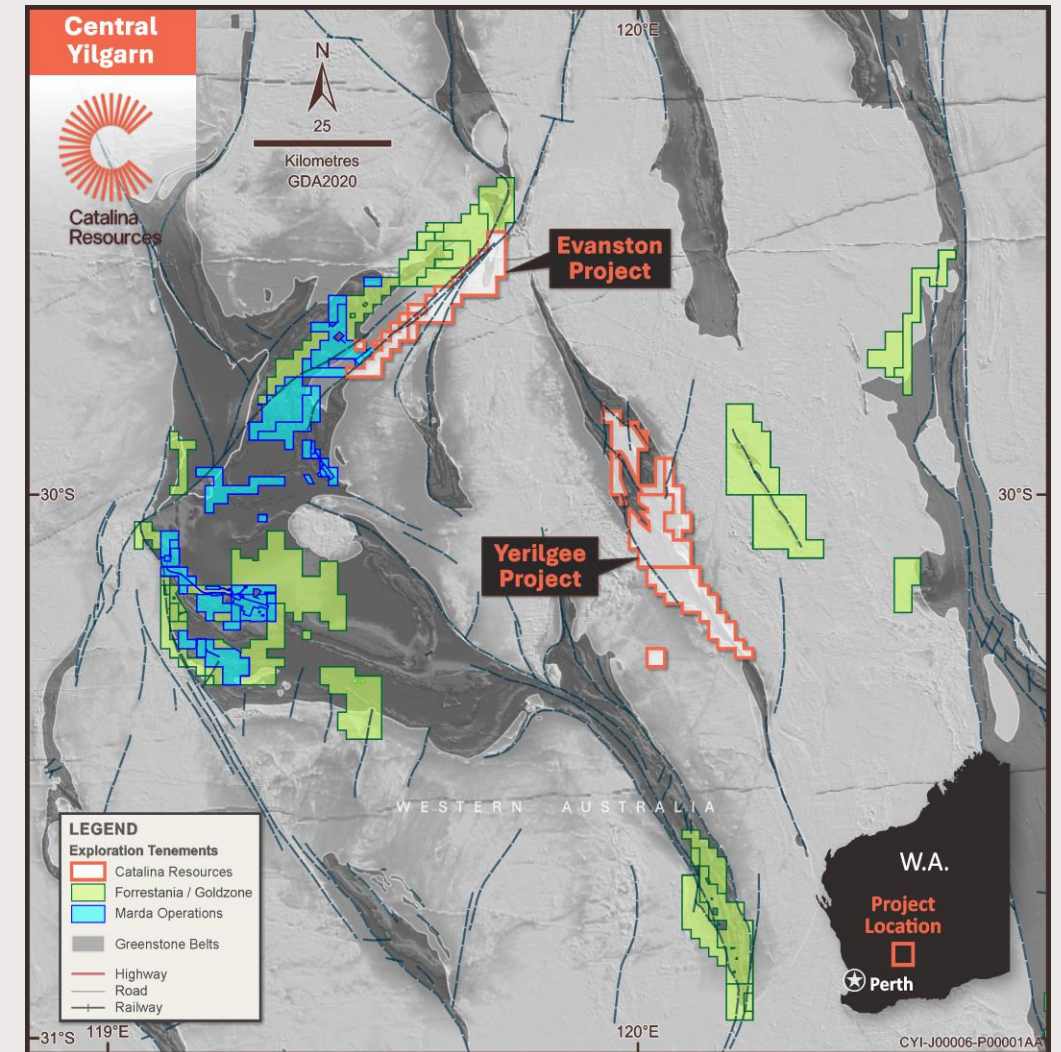
- Over 650 km² highly prospective greenstone belts located within an underexplored region of the world-renowned Yilgarn Craton.
- 20,000 metre drilling program across its Evanston and Yerilgee Projects is underway with Phase 1 drilling (~10,000m) expected to be completed.
- A second RC drilling rig in mobilisation to accelerate drilling across multiple priority targets.
- Assay results are pending and will be integrated with geological modelling to guide subsequent drilling programs.
- The program is designed to target highly prospective gold-hosting structures that have previously returned shallow high-grade intercepts including:

Evanston

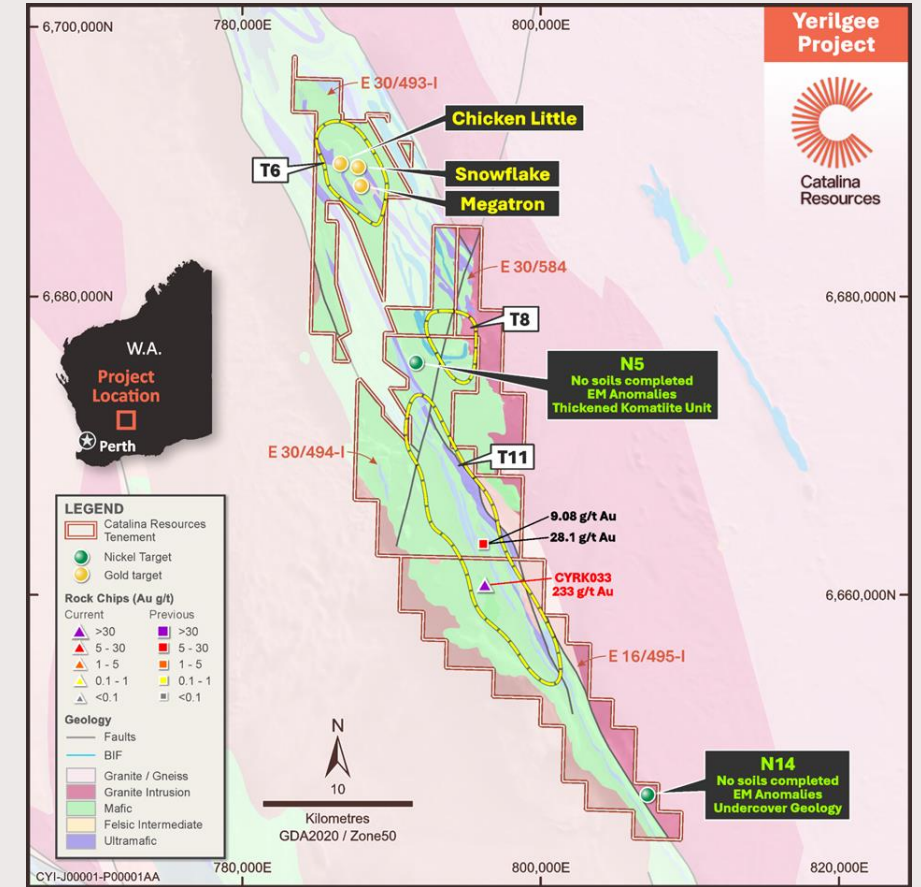
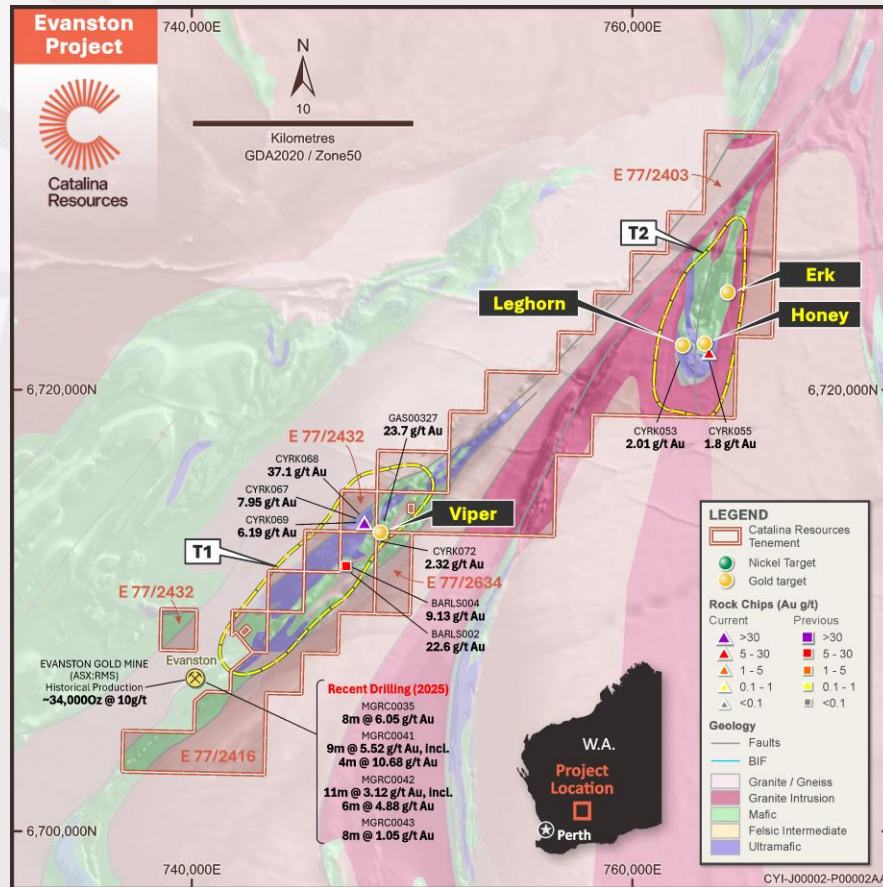
- **48m @ 0.67g/t au** from 27m including **21m @ 1.13g/t au** from 54m and **3m @ 2.28g/t au** from 63m
- **15m @ 1.5 g/t Au** from 12m (incl. **3 m @ 6.7 g/t Au**)

Yerilgee

- **17m @ 4.1 g/t Au** and **28.0 g/t Ag** from 53m, including **4m @ 14.9 g/t Au** and **72.2 g/t Ag** from 54m
- **27 m @ 0.6 g/t Au** from 6 m, including **2 m @ 2.2 g/t Au**, and **1 m @ 9.0 g/t**
- **24 m @ 1.6 g/t Au** from 0 m, including **9 m @ 3.3 g/t Au** from 12m
- **16 m @ 1.9 g/t Au** from surface (incl. **4 m @ 8.5 g/t Au**)



CENTRAL YILGARN BELT GEOLOGY

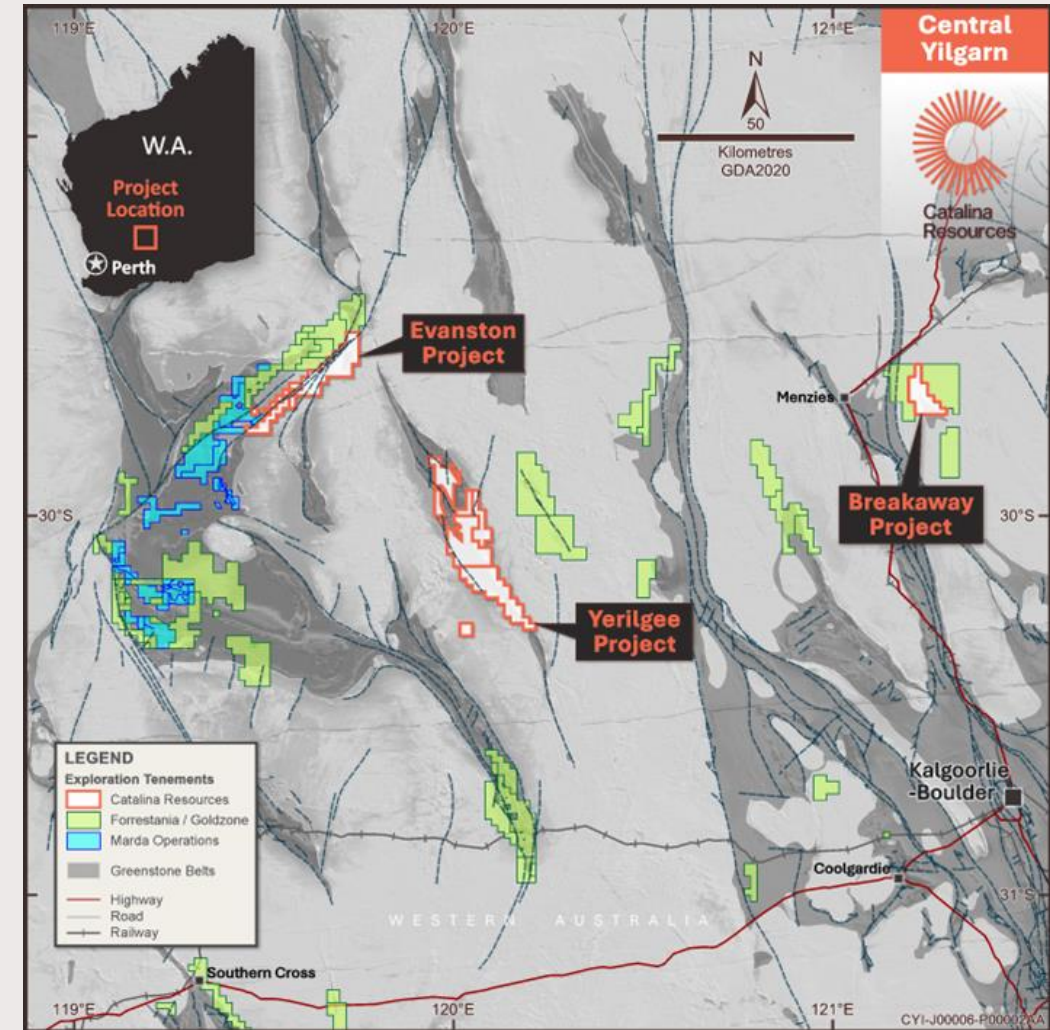


- Part of the **Archaean Yilgarn Craton**, comprising **mafic-ultramafic volcanic rocks intruded by felsic porphyries** and cut by major shear zones.
- Mineralisation occurs along **granite-greenstone contacts** and within **quartz-carbonate-pyrite veining** hosted by magnetite-rich, sheared units.
- The belt exhibits **multiple structurally controlled gold corridors** parallel to regional shears, similar to those hosting long-life operations elsewhere in the Yilgarn.
- Structurally favourable dome-and-shear setting containing **high-Mg basalts, ultramafics, banded iron formations (BIFs), and felsic intrusives**.
- **Gold mineralisation hosted within folded BIF sequences** intruded by felsic porphyry, with associated pathfinder geochemistry and **strong magnetic responses**.
- Multiple parallel shear zones and fold hinges **provide structural traps for gold deposition**.

BREAKAWAY DAM

PROJECT OVERVIEW

- Copper-dominant volcanic massive sulphide (VMS) system with strong technical foundations and demonstrated exploration momentum
- Drilling and DHEM have **confirmed** a copper-rich VMS mineral system
- **Sulphide mineralisation intersected in all diamond holes** within the target horizon
- Copper grades up to **1.97% Cu** and zinc up to **1.44% Zn** returned
- Mineralised **horizons average ~10 m true width** over ~700 m of strike
- Multiple strong EM conductors **remain partially or completely** untested
- Recent Drilling returned multiple intercepts including:
 - **9.2 m @ 0.48% Cu**, including:
 - **0.95 m @ 1.18% Cu**
 - **1.7 m @ 1.05% Cu**
 - **1.47 m @ 1.97% Cu**
 - **1.45 m @ 0.16% Cu and 1.44% Zn**
 - **4.2m @ 0.32% Cu**
- Potential **gold upside** (assays pending)



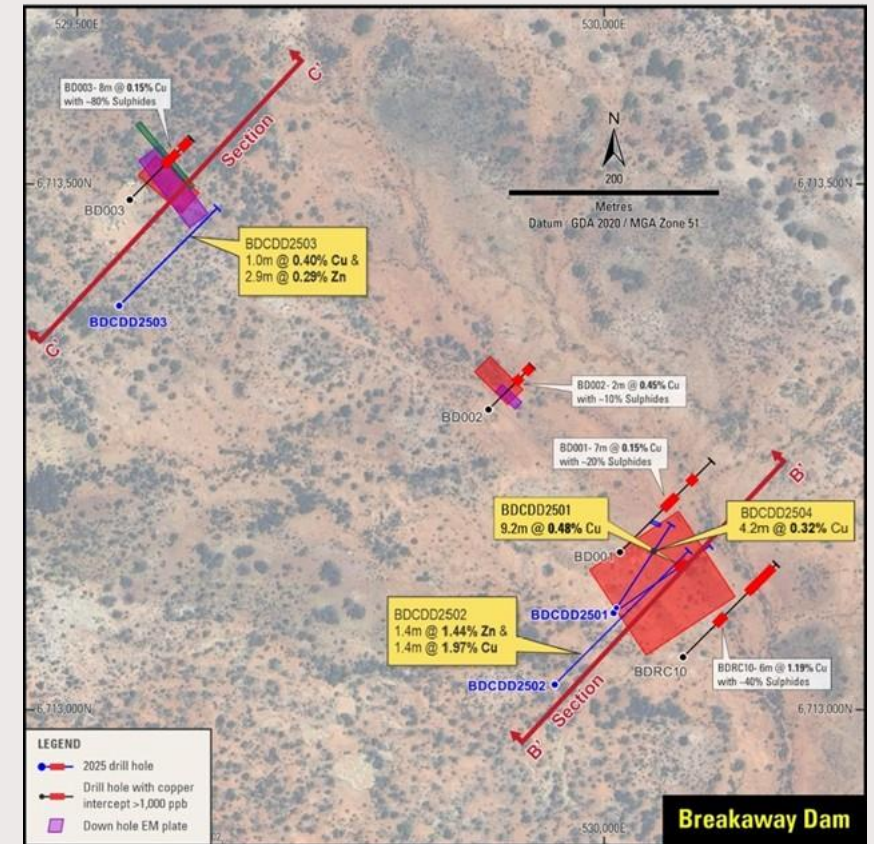
BREAKAWAY DAM

PROJECT OVERVIEW

- Beyond the central 700-metre mineralised corridor, geological and geophysical interpretation has identified a broader prospective stratigraphic trend extending for **approximately 16 kilometres** across the project area, subject to drilling
- Large portions of this **trend remain untested**, indicating potential for **additional VMS mineralisation** at Breakaway Dam
- Next Steps:
 - Complete and report gold assay results once analysis is finalised
 - Drill test untested high-conductance EM plates identified by the recent DHEM surveys
 - Undertake systematic RC drilling across the central mineralised corridor to assess continuity and scale beyond EM anomalies
 - Progress first-pass drilling of regional targets along the broader prospective trend



Chalcopyrite and pyrrhotite in BDCDD2501 at approximately 90m downhole

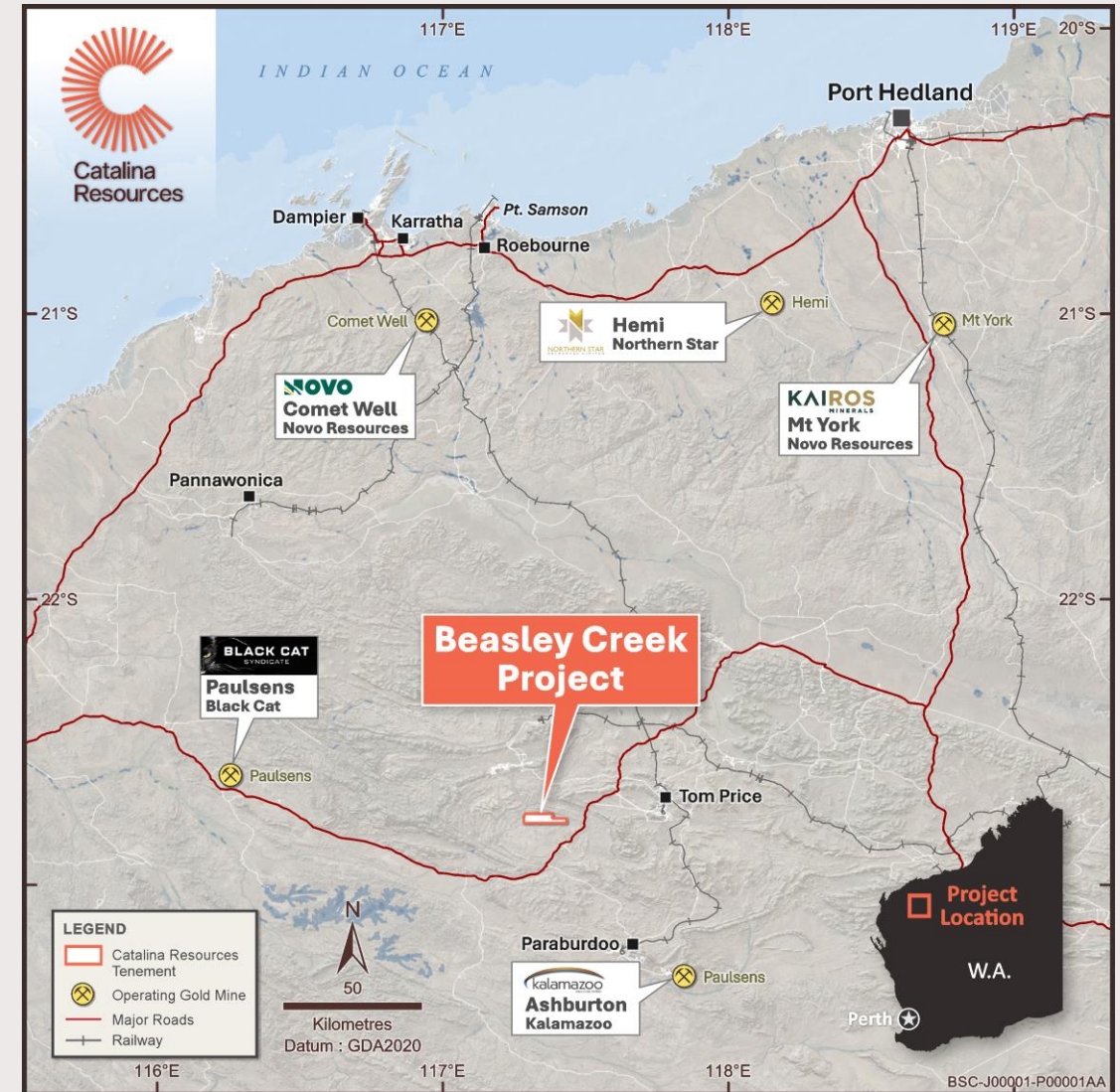


Chalcopyrite mineralisation in BDCDD2502 at approximately 237m downhole

BEASLEY CREEK

PROJECT OVERVIEW

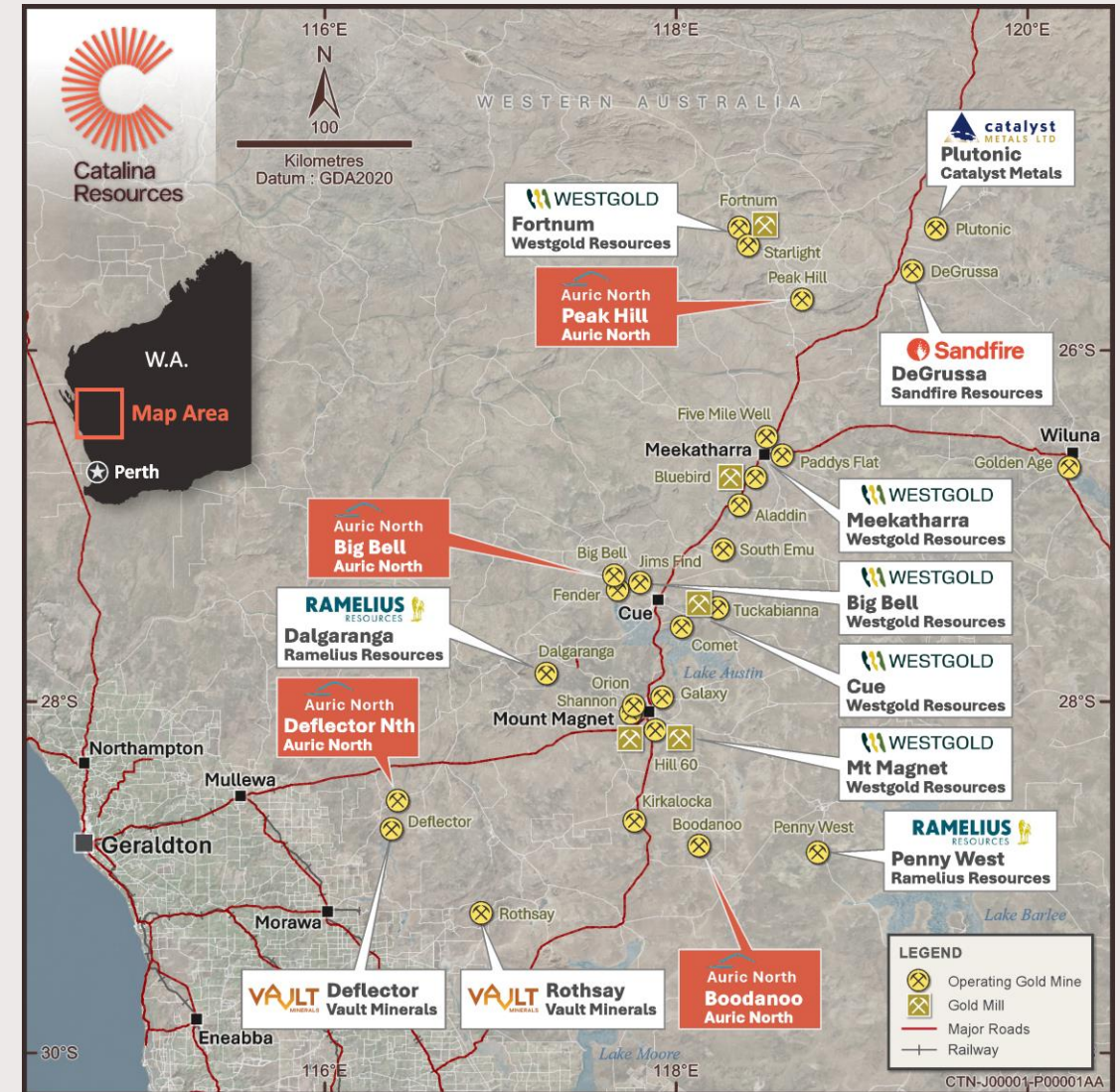
- Catalina's first **district-scale footprint** in the Pilbara, creating a complementary growth hub to its portfolios
- **Independent review confirms prospectivity** for shear-hosted orogenic gold mineralisation. This has not been systematically drill-tested in more than two decades
- Flamingo Target identified as a **high-priority drill-ready target**
- Historical drilling (1994) returned **4m @ 11.4 g/t Au (20–24m)** in RRC15, with the intercept remaining open to the north based on updated structural interpretations
- Specialist heritage advisers appointed and engagement initiated with the relevant Aboriginal representative body
- Next Steps:
 - Infill and extension soil programs over Flamingo
 - Confirmation drilling north of RRC15
 - Targeted follow-up of anomalies on pending tenements
 - Application for EIS co-funding to support initial drilling activities.



AURIC NORTH ACQUISITION

PROJECT OVERVIEW

- The Auric North portfolio comprises five exploration licences and one prospecting licence covering approximately 45,000 hectares (~413 km²) within the Mid-West region. The project areas include:
 - Deflector North
 - Peak Hill
 - Big Bell (North and South)
 - Boondanoo
- Portfolio represent a rare opportunity to secure a **contiguous land position** within an established mining district that hosts
- Peak Hill contains widespread air-core gold anomalism with fresh rock remaining untested. The project provides immediate follow-up targets for RC drilling, subject to a technical review and approvals. Previously reported historical results include:
 - **10m @ 1.43 g/t Au from 65m (incl. 5m @ 2.7 g/t Au)** (PHAC0184)
 - **5m @ 0.25 g/t Au from 75m** (PHAC0180)



+61 8 6165 8858

info@catalinaresources.com.au

Level 2/7 Havelock Street
West Perth, WA 6005

catalinaresources.com.au

ASX:CTN



DISCLAIMER

This presentation has been prepared by Catalina Resources Ltd (“Company”). It does not purport to contain all the information that a prospective investor may require in connection with any potential investment in the Company. You should not treat the contents of this presentation, or any information provided in connection with it, as financial advice, financial product advice or advice relating to legal, taxation or investment matters.

No representation or warranty (whether express or implied) is made by the Company or any of its officers, advisers, agents or employees as to the accuracy, completeness or reasonableness of the information, statements, opinions or matters (express or implied) arising out of, contained in or derived from this presentation or provided in connection with it, or any omission from this presentation, nor as to the attainability of any estimates, forecasts or projections set out in this presentation.

This presentation is provided expressly on the basis that you will carry out your own independent inquiries into the matters contained in the presentation and make your own independent decisions about the affairs, financial position or prospects of the Company. The Company reserves the right to update, amend or supplement the information at any time in its absolute discretion (without incurring any obligation to do so).

Neither the Company, nor its related bodies corporate, officers, their advisers, agents and employees accept any responsibility or liability to you or to any other person or entity arising out of this presentation including pursuant to the general law (whether for negligence, under statute or otherwise), or under the Australian Securities and Investments Commission Act 2001, Corporations Act 2001, Competition and Consumer Act 2010 or any corresponding provision of any Australian state or territory legislation (or the law of any similar legislation in any other jurisdiction), or similar provision under any applicable law. Any such responsibility or liability is, to the maximum extent permitted by law, expressly disclaimed and excluded.

Nothing in this material should be construed as either an offer to sell or a solicitation of an offer to buy or sell securities. It does not include all available information and should not be used in isolation as a basis to invest in the Company.

ASX Listing Rule 5.23.2

The Company confirms that it is not aware of any new information or data that materially affects the information included in this announcement. No exploration data or results is included in this document that has not previously been released publicly. The source of all data or results have been referenced.

Future matters

This presentation contains reference to certain intentions, expectations, future plans, strategy and prospects of the Company.

Those intentions, expectations, future plans, strategy and prospects may or may not be achieved. They are based on certain assumptions, which may not be met or on which views may differ and may be affected by known and unknown risks. The performance and operations of the Company may be influenced by a number of factors, many of which are outside the control of the Company. No representation or warranty, express or implied, is made by the Company, or any of its directors, officers, employees, advisers or agents that any intentions, expectations or plans will be achieved either totally or partially or that any particular rate of return will be achieved.

Given the risks and uncertainties that may cause the Company’s actual future results, performance or achievements to be materially different from those expected, planned or intended, recipients should not place undue reliance on these intentions, expectations, future plans, strategy and prospects. The Company does not warrant or represent that the actual results, performance or achievements will be as expected, planned or intended.

US disclosure

This document does not constitute any part of any offer to sell, or the solicitation of an offer to buy, any securities in the United States or to, or for the account or benefit of any “US person” as defined in Regulation S under the US Securities Act of 1993 (“Securities Act”). The Company’s shares have not been, and will not be, registered under the Securities Act or the securities laws of any state or other jurisdiction of the United States, and may not be offered or sold in the United States or to any US person without being so registered or pursuant to an exemption from registration including an exemption for qualified institutional buyers.