



Rum Jungle Resources Ltd
ABN 33 122 131 422
20/90 Frances Bay Drive
Stuart Park NT 0820
GPO Box 775
Darwin NT 0801

Tel: (08) 8942 0305
Fax: (08) 8942 0310

Listings Officer

ASX Melbourne

ASX Announcement by Electronic Lodgement, 29 March, 2012

AMMAROO PHOSPHATE PROJECT

DRILLING CAMPAIGN

Favourable weather has indicated the 2012 drilling program will commence as planned next week.

A temporary camp is being established on site at the Ammaroo 1 Deposit, situated 80 km east of the base camp at Barrow Creek 1. Line clearing of a 400 metre-spaced grid over approximately 20 square kilometres has also been completed with the rig due to commence next week. The initial program will be on 400 metre-spaced holes, which on past experience of a drilling rate of around 10 holes per day should see the first program completed by end of April. It is expected that this drilling should indicate sufficient continuity between existing holes to infer a resource of similar size to Barrow Creek 1.

The rig and personnel will then move back to Barrow Creek 1 base camp where continuous extensional and infill drilling will be carried out on the Barrow Creek 1 deposit, whilst CLC site clearances and Department of Resources approvals for the newly acquired tenements west of Barrow Creek 1 are obtained.

Exploration drilling on cleared lines on the newly acquired tenements south of Murray Downs homestead should take approximately one month to complete. This will take new drilling to within 20 kilometres of the Central Australian Railway. The drill rig and crews are likely to remain on site for the entire 2012 field season.

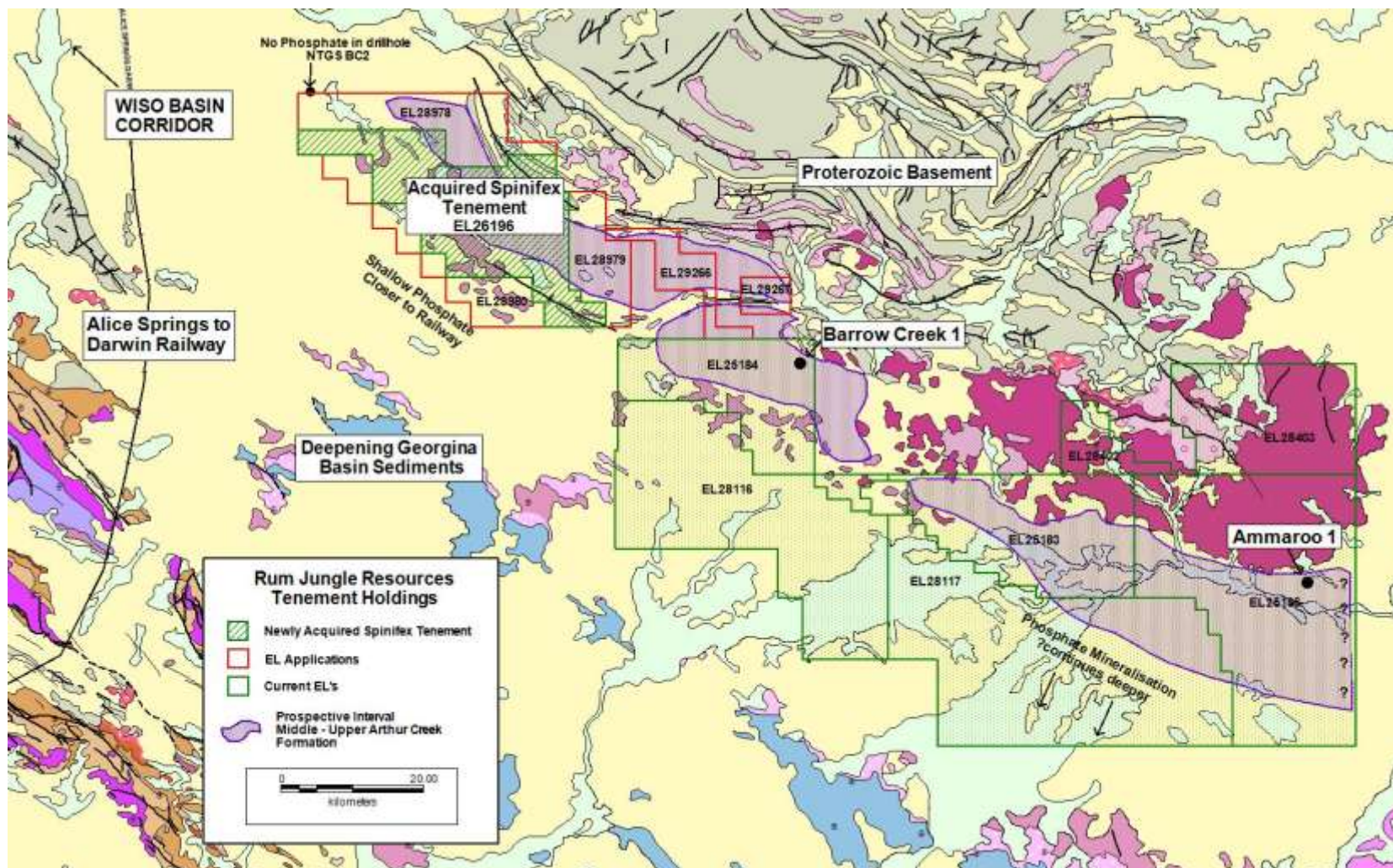


Figure 1: Location Map



Rum Jungle Resources Ltd
ABN 33 122 131 422
20/90 Frances Bay Drive
Stuart Park NT 0820
GPO Box 775
Darwin NT 0801

Tel: (08) 8942 0305
Fax: (08) 8942 0310

D.W.Muller M.Sc., M.B.A., F.Aus.I.M.M.
Managing Director

The information in this report that relates to exploration results, mineral resources or ore reserves is based on information compiled by Mr David Muller, who is a Fellow of the Australasian Institute of Mining and Metallurgy.

Mr Muller is Managing Director and a consultant to the Company. Mr Muller has sufficient experience which is relevant to the style of mineralisation and type of deposit under consideration and to the activity to which he is undertaking to qualify as a Competent Person as defined in the 2004 edition of the "Australasian Code for Reporting of Exploration Results, Mineral Resources and Ore Reserves".

Mr Muller consents to the inclusion in this report on the matters based on his information in the form and context in which it appears.

This release may contain forward-looking statements. These forward-looking statements are not historical facts. Rather, these forward-looking statements are based on the current beliefs, interpretations, assumptions, expectations, estimates, and projections. Actual results could differ materially from a conclusion, forecast or projection in the forward-looking information.