



**DRAGON
ENERGY**



Corporate Presentation

16 September 2011

Website: www.dragonenergyltd.com

Contact: info@dragonenergyltd.com

Disclaimer

This document has been prepared by Dragon Energy Ltd (“DLE”) (ABN 38 119 992 175) and provided as a basic overview on the Company. This document does not purport to be all-inclusive or to contain all the information that someone may require to evaluate the prospects or assets of DLE.

None of DLE, any of its related bodies corporate or any of their representatives assume any responsibility for, or makes any representation or warranty, express or implied, with respect to the accuracy, reliability or completeness of the information contained in this document and none of those parties have or assume any obligation to provide any additional information or to update this document.

To the fullest extent permitted by law, DLE, its related bodies corporate and their representatives expressly disclaim liability for any loss or damage arising in respect of your reliance on the information contained in this document (including your reliance on the accuracy, completeness or reliability of that information), or any errors in or omissions from this document, including any liability arising from negligence.

Although reasonable care has been taken to ensure that the facts stated in this presentation are accurate and or that the opinions expressed are fair and reasonable, no reliance can be placed for any purpose whatsoever on the information contained in this document or on its completeness.

This document contains statements which may be in the nature of forward-looking statements. Actual results and developments may differ materially from those expressed or implied by these forward looking statements depending on a variety of factors. No representation or warranty is given, and nothing in this document or any other information made available by DLE or any other party should be relied upon as a promise or representation, as to the future condition of the respective businesses and operations of DLE.

This document is not intended to be an offer for subscription, invitation, solicitation or recommendation with respect to securities in DLE in any jurisdiction. Without limiting the foregoing, this document is not intended as an offer, invitation, solicitation or recommendation with respect to the purchase or sale of any security in any jurisdiction or to any person to whom it is unlawful to make such an offer, invitation, solicitation or recommendation.

This document does not constitute an advertisement for an offer or proposed offer of securities. It is not intended to induce any person to engage in, or refrain from engaging in, any transaction.

Summary

- ASX listed resource company with A\$14.7 million cash at June 30, 2011
- Flagship Pilbara Iron Project with 62.7Mt of JORC Resource at the Rocklea Project
- Additional Exploration Targets¹ of 40 – 51Mt at Rocklea Project, and 140 – 190Mt at the nearby Nameless Project
- Portfolio of iron ore, manganese, gold and base metals exploration projects in Western Australia
- Strategic support from major shareholder, a leading private Chinese mining company
- Experienced board and management comprising of Australian and Chinese nationals

¹ See last page for definition of Exploration Target

Corporate

ASX codes

- shares	DLE
- options	DLEO

Shares on issue	206.4 m
-----------------	---------

Options on issue

- listed (Nov 2014 @\$0.35)	47.46 m
- unlisted (May 2012 @\$0.30)	11.15 m

Cash (at June 30, 2011)	A\$14.7m
-------------------------	----------

Directors

Jie Chen	Executive Chairman
Gang Xu	Managing Director
Anthony Ho	Executive Director
Qingyong Guo	Non Executive Director

Shareholders

Top 20 Shareholders (Sep 2011)	88.2%
--------------------------------	-------

Major Shareholders (Sep 2011)	
- Shandong Taishan Group	70.3%
- Mr Gang Xu	6.6%

Executives

Jie Chen – Executive Chairman

- Chairman of Shandong Taishan Group
- Awarded Top 10 young entrepreneur in Shandong province
- Awarded Top 20 best mine manager in China

Anthony Ho – Executive Director

- Over 25 yrs experience in corporate and finance services
- Principal of corporate advisory and services firm
- Director and secretary to several ASX listed companies

Henry Ng – Corporate Development Manager

- Head of Asian Development at Aquila Resources
- Senior M&A banker at Barclays and HSBC in Hong Kong
- Mining Engineer, worked at Rio Tinto Paraburdoo Mine

Joel Brook – Senior Geologist

- 5 yrs experience in iron, base metals, and gold exploration
- Field expertise covering the whole of Western Australia
- Senior geologist for major drilling programs

Gang Xu – Managing Director

- Over 20 yrs experience in mining and energy industry
- Finance and Marketing Manager for Sino Gold Limited
- Senior geologist at China National Nuclear Corporation

Mark Hafer – Exploration Manager

- Over 10 yrs experience in iron, gold and base metals exploration
- Field experience in WA, SA and Kazakhstan
- Senior Geologist at Mt Gibson Iron

Norman Daffen – Project Manager

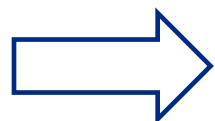
- 25 yrs in mining and bulk material supply chain
- 8 yrs Executive General Manager Siemens Ltd
- 6 yrs Midwest Corporation Project Manager

Karen Logan – Company Secretary

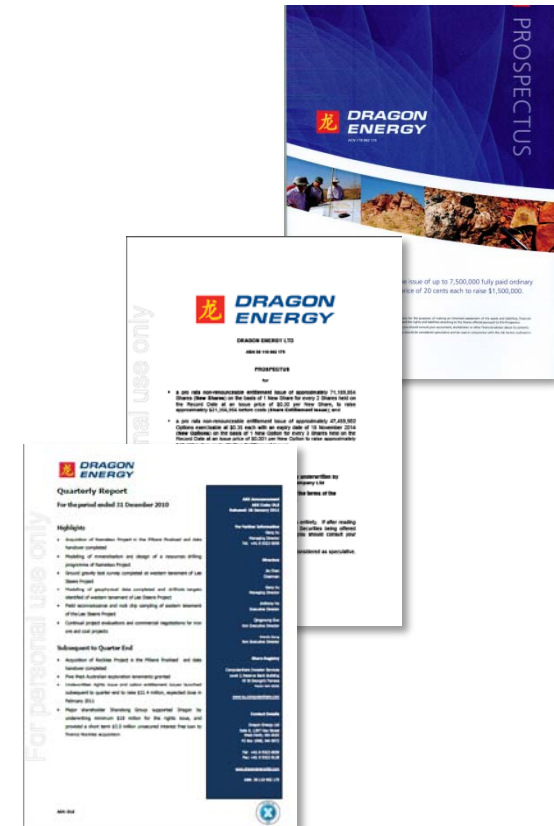
- Principal of corporate and accounting services firm
- Company secretary to several ASX listed companies
- Significant experience in capital raising projects and ASX listings

Milestones

- Feb, 2009** **Listed on the ASX**
- Dec, 2009** **Acquired 3 exploration projects from Polaris NL**
- Oct, 2010** **Acquired Rocklea and Nameless Projects from AusQuest**
- Jan, 2011** **Applications for 5 WA exploration tenements granted**
- Feb, 2011** **Completed rights and options issue to raise A\$19.2m**
- Aug, 2011** **Commenced Pilbara Iron Project Scoping Study**
- Sep, 2011** **Level 2 Environmental Survey Commenced**



Consistent Progress



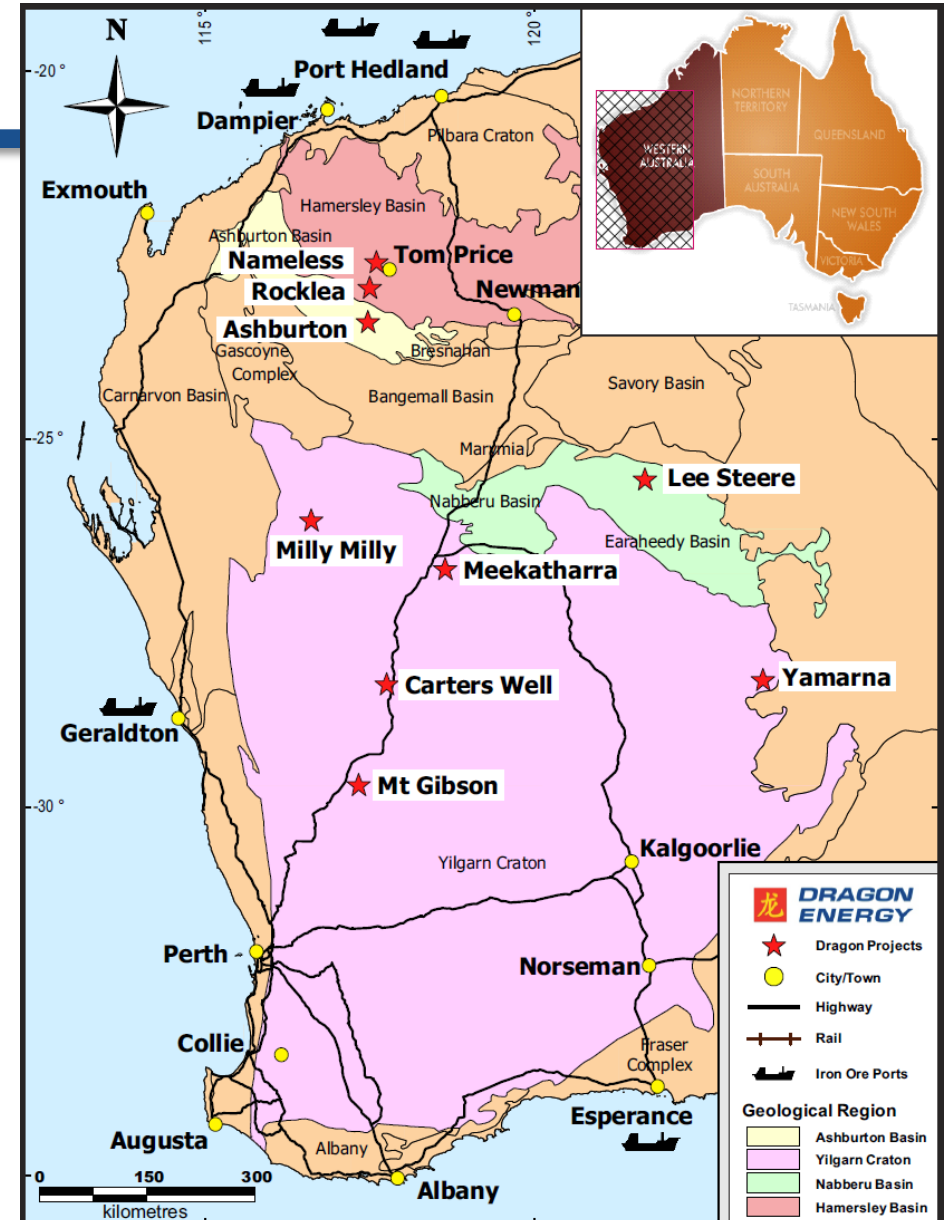
Project Summary

Pilbara Iron Project

- Rocklea
- Nameless

WA Exploration (Target Minerals)

- Lee Steere (Mn, Fe)
- Ashburton (Fe, Au)
- Mt Gibson (Au, Base metals)
- Carters Well (Au)
- Milly Milly (Fe, Base metals)
- Yamarna (Base metals, Au)
- Meekatharra (Au)



Pilbara Iron Project - Overview

Two centrally located advanced iron ore exploration projects in the prolific Pilbara region¹ of Western Australia

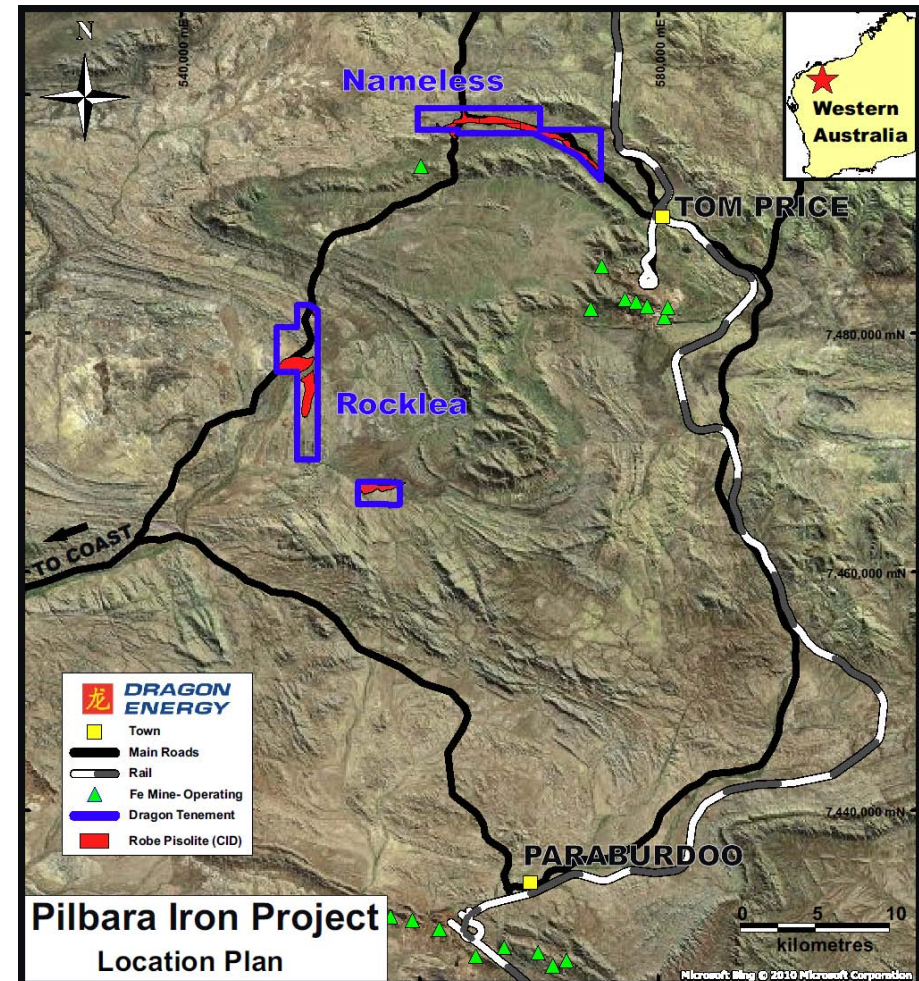
Rocklea

62.7Mt @ 53.41% Fe (60.39% caFe)²
JORC Inferred Resource

40 – 51Mt @ 50 to 55% Fe (56-62% caFe)
Exploration Target³

Nameless

140 – 190Mt @ 48 to 52% Fe (54-56% caFe)
Exploration Target³

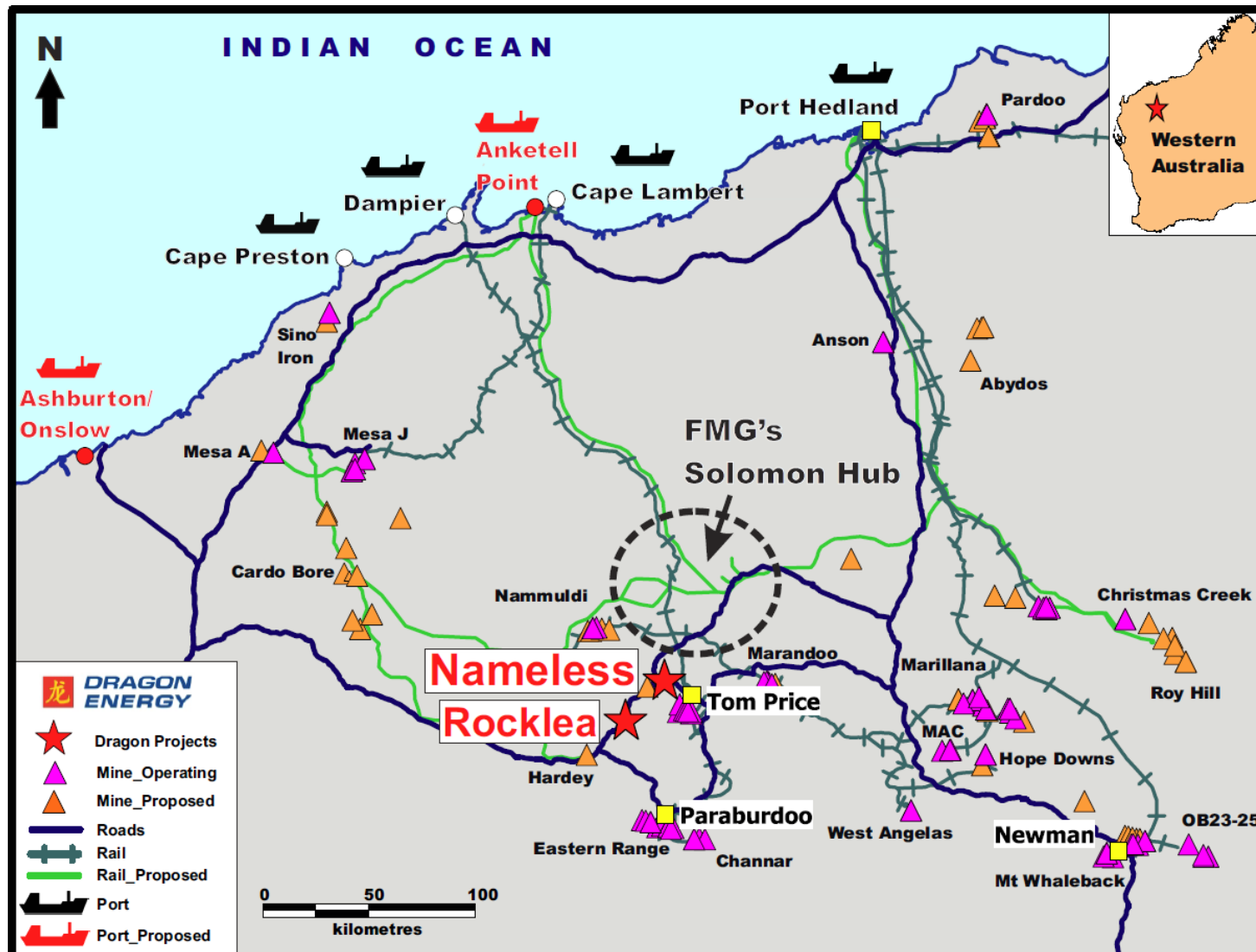


¹ In 2010, the Pilbara region accounted for 92.5% of Australia's total iron ore production and 79.5% of total identified resources (source: Geoscience Australia)

² 50% Fe cut-off grade

³ See last page for definition of Exploration Target

Pilbara Iron Project - Infrastructure



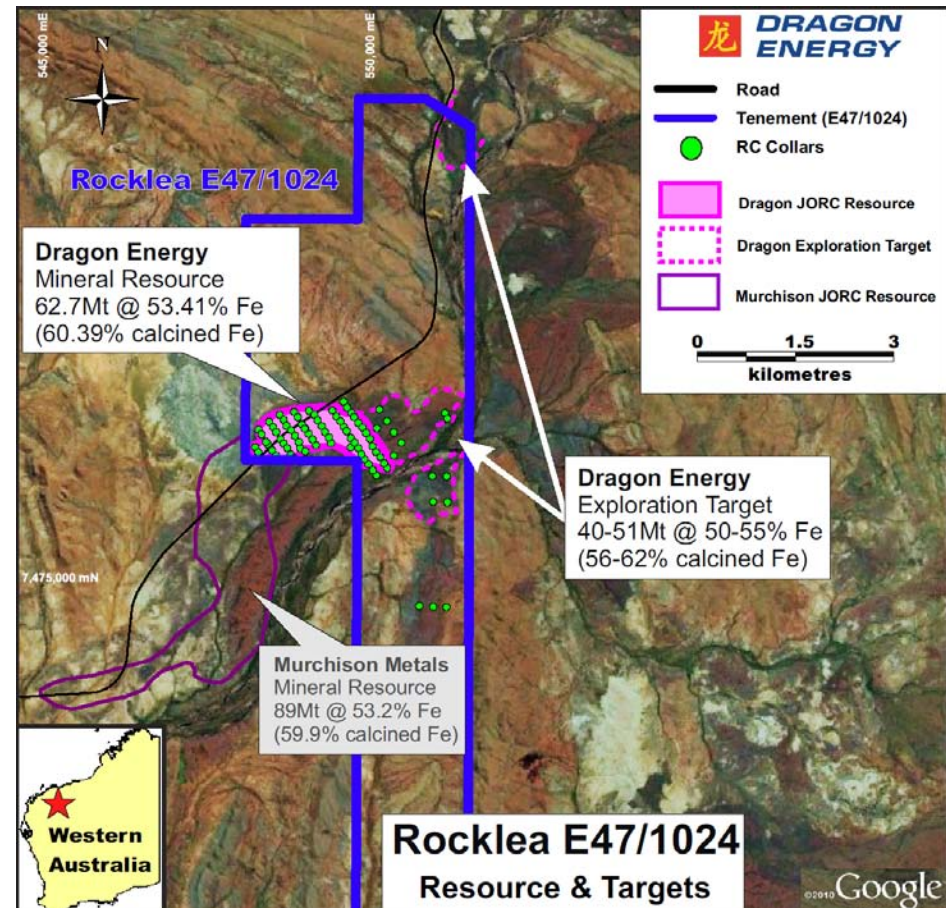
Pilbara Iron Project - Rocklea

- Drilling has identified a JORC Inferred Resource of 62.7Mt @ 53.41% Fe (60.39% caFe)
- Additional Exploration Target¹ of 40 to 51Mt @ 50-55% Fe (56-62% caFe) identified
- Channel iron style mineralisation
 - Shallow deposit, low mining costs
 - Direct shipping ore characteristics
- Upcoming drilling programme aiming to increase the confidence level of the resource

Rocklea JORC Ore Resource Summary

	Million tonnes	Fe (%)	caFe (%)	SiO ₂ (%)	Al ₂ O ₃ (%)	P (%)	LOI (1000°C) (%)	Cut-off grade
Inferred	62.7	53.41	60.39	7.73	2.80	0.034	11.56	50%
Inferred	28.0	55.62	62.71	6.03	2.06	0.034	11.31	54%

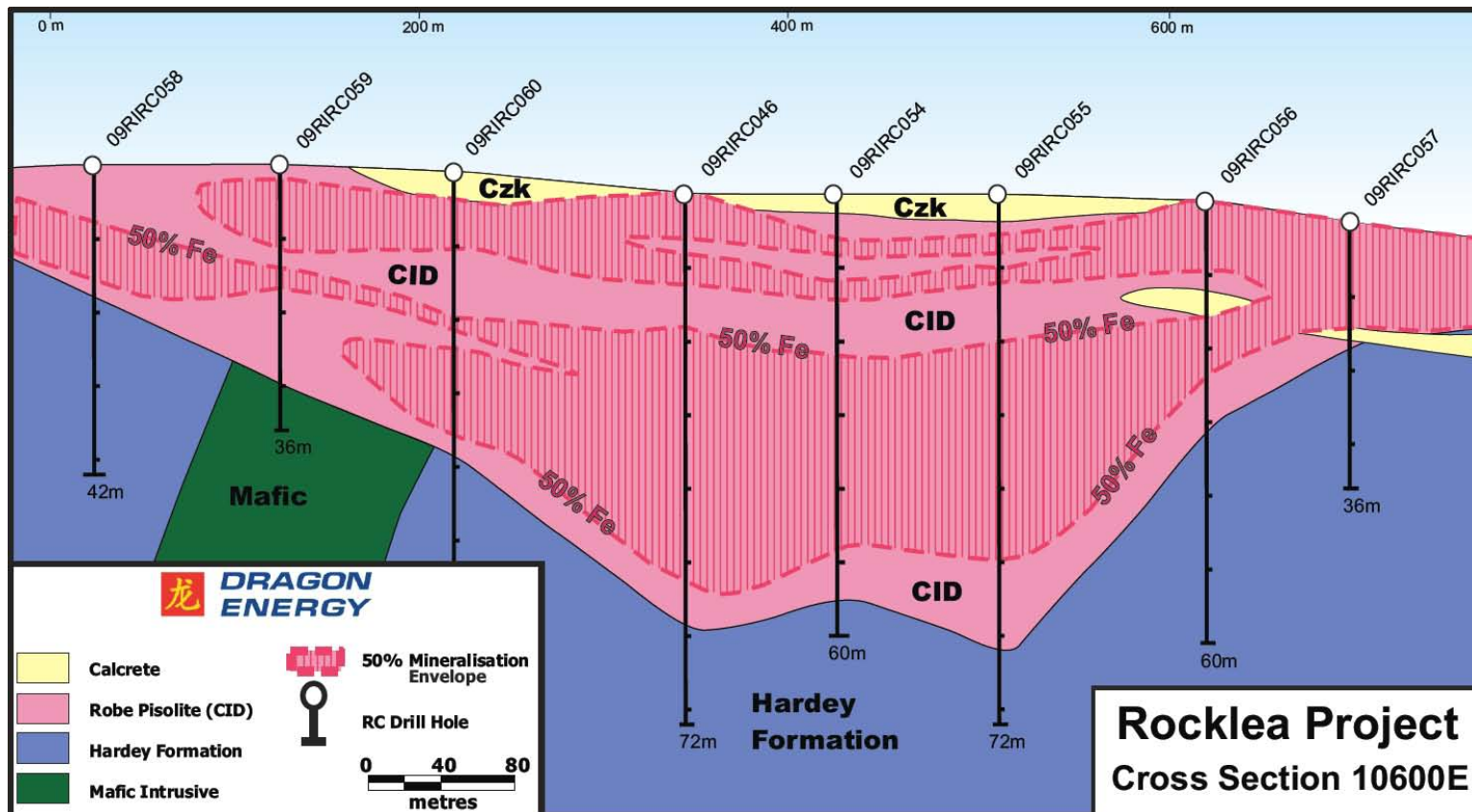
Source: Golder Associates September 2011 Resource Statement



Pilbara Iron Project – Rocklea Cross Section

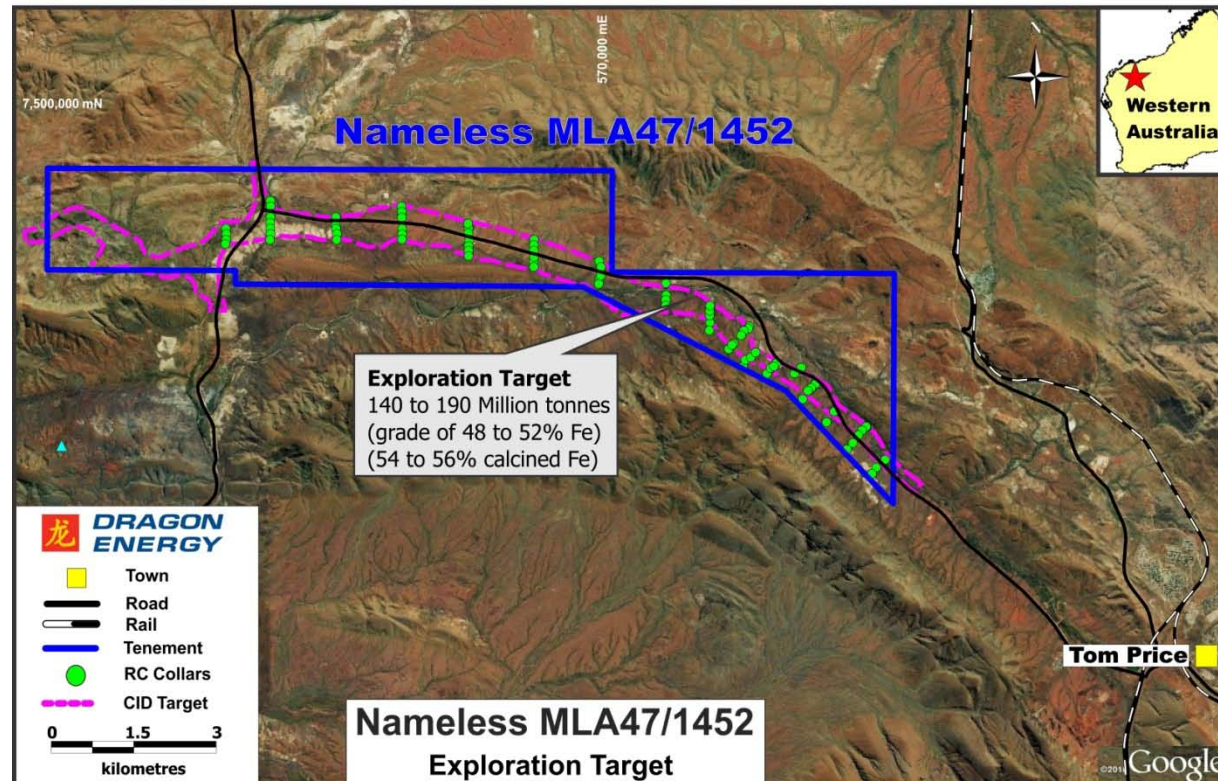
CID section 10600E

Strike Length: 3km
Channel Width: up to 1000m
CID Thickness: up to 60m



Pilbara Iron Project - Nameless

- CID and Marra Mamba mineralisation with an Exploration Target¹ of 140 - 190Mt at 48-52% Fe (54-56% caFe) identified from previous drilling
- Additional infill drilling planned to define a JORC standard resource

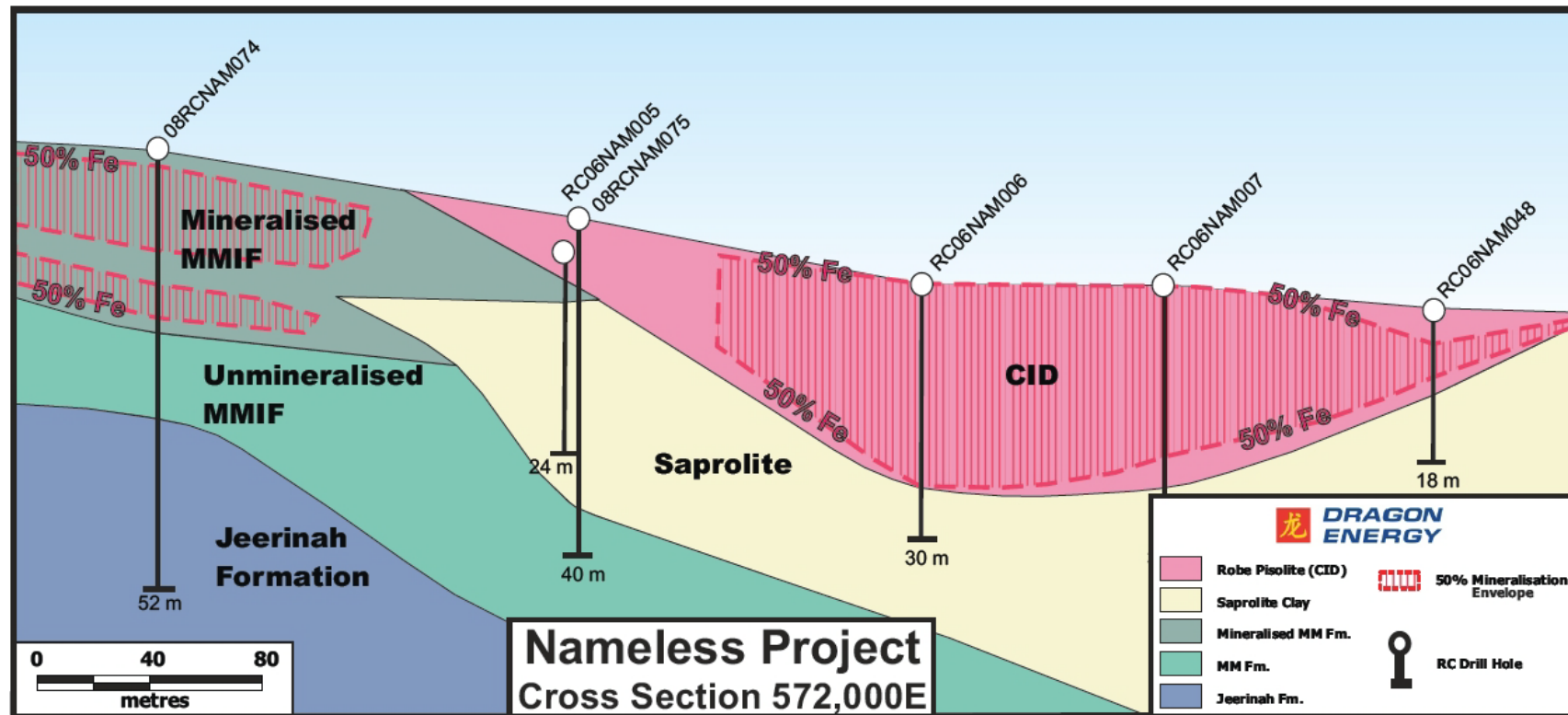


¹ see last page for definition for Exploration Target

Pilbara Iron Project – Nameless Cross Section

CID section 572000E

Strike Length: 15km
Channel Width: 400 to 600m
CID thickness: up to 24m



Exploration - Lee Steere

Tenement

E69/2126, E69/2377

Location

200km north-east of Wiluna

Area

155km²

Targets

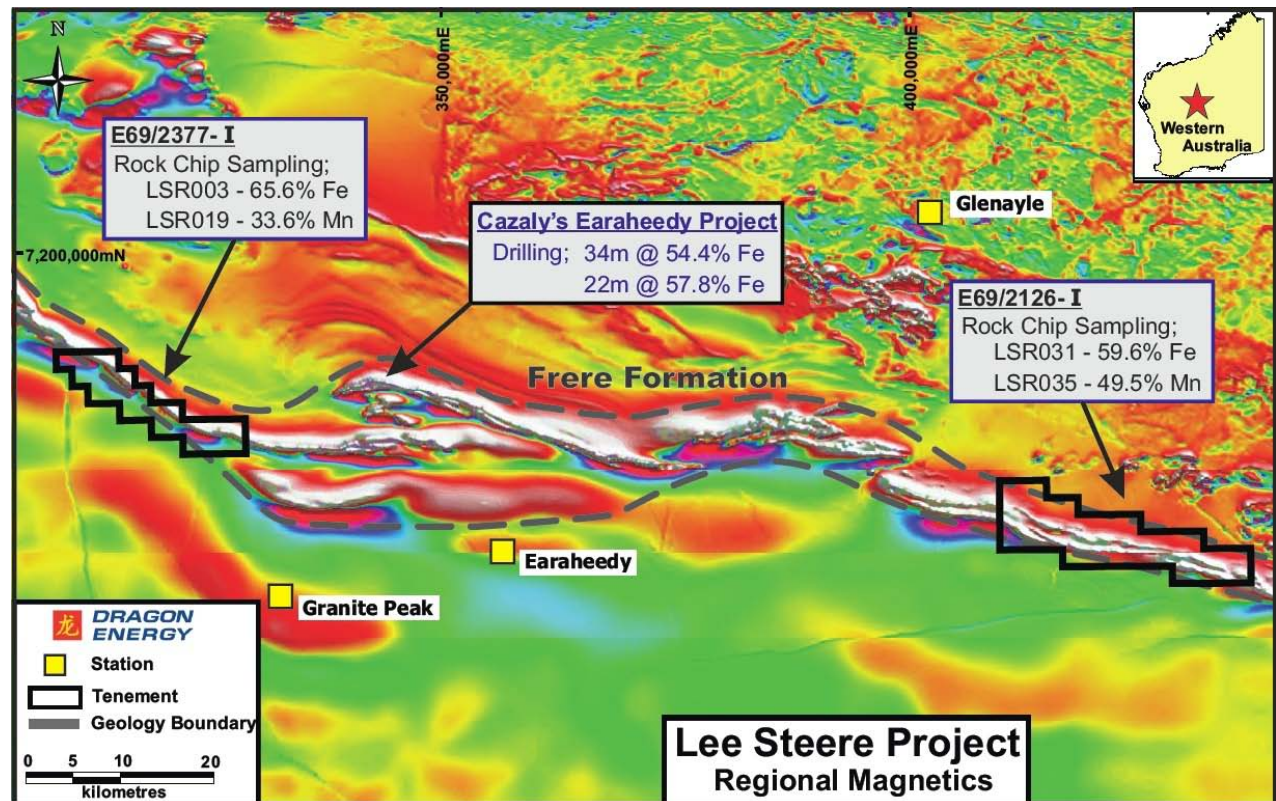
Manganese, Iron

Status

Encouraging surface sampling results;

Drill testing planned;

Project awarded WA
Government co-funding



Exploration – Ashburton

Tenement

E08/2209-2211, E47/2417

Location

Pilbara region, close to Paraburdoo infrastructure

Area

507km²

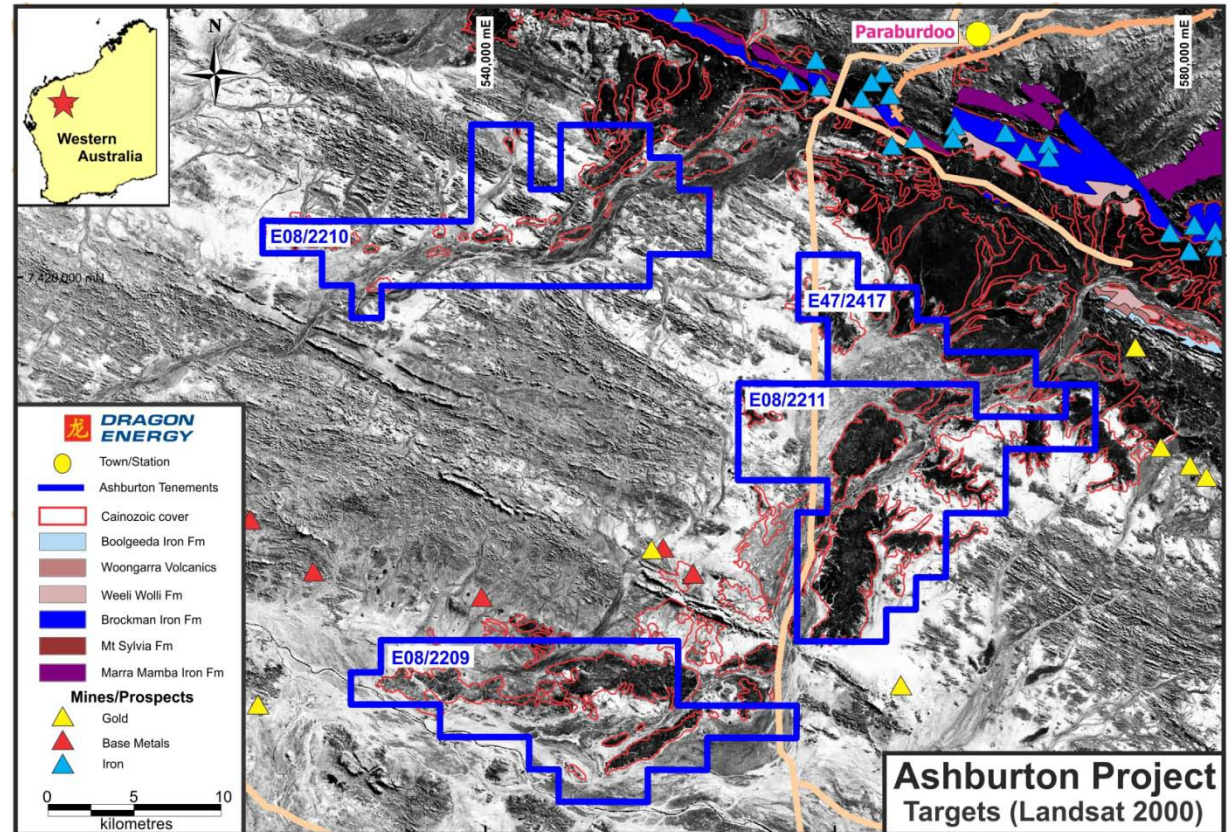
Targets

CID and detrital Iron

Status

Targets identified;

Exploration planned upon grant of tenements



Exploration – Mt Gibson

Tenement

E59/1637-38, E59/1686-87

Location

80km north-east of Wubin, 30km to Extension Hill Iron Project, adjacent to Mt Gibson Gold Mine

Area

265km²

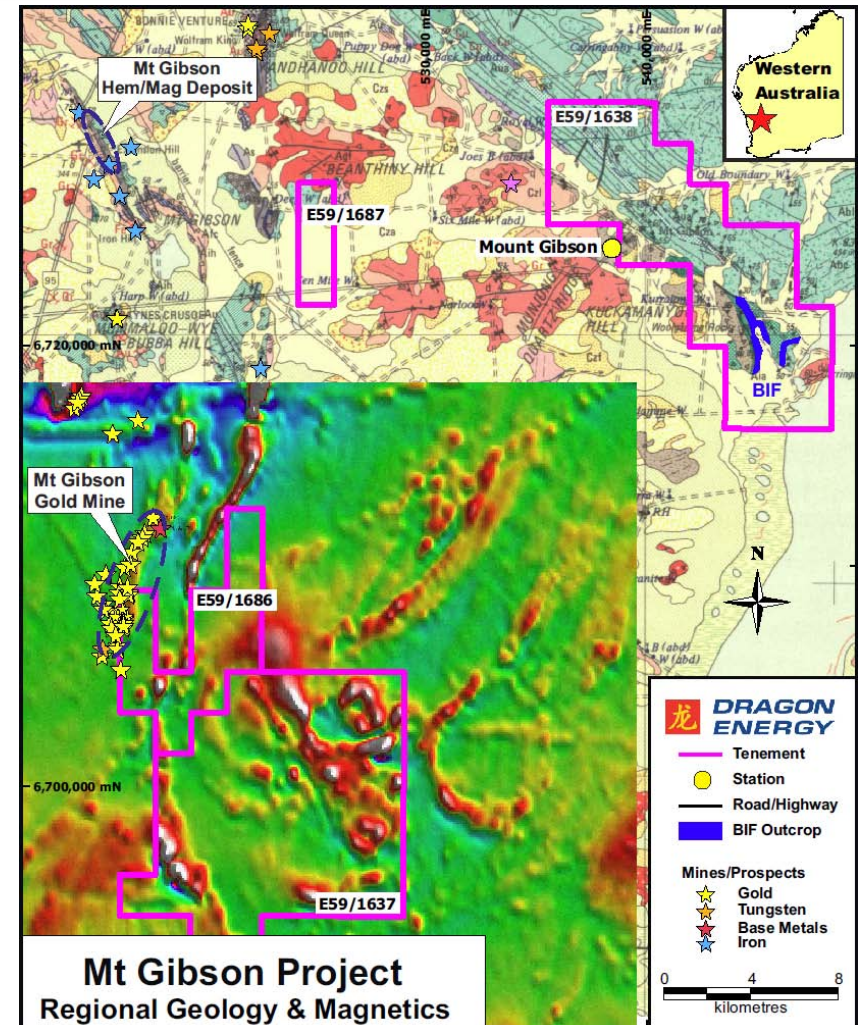
Targets

Gold, Base metals

Status

Completed initial review;

Targets generated for detailed exploration



Exploration – Carters Well

Tenement

E59/1639

Location

30km south of Mt Magnet gold mining district

Area

142km²

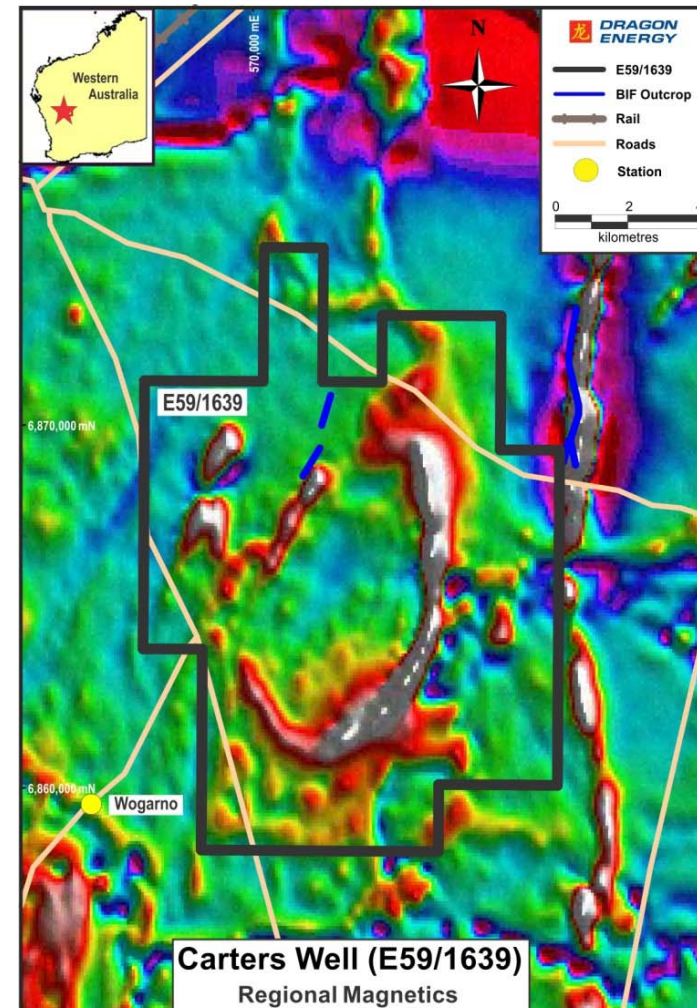
Targets

Gold

Status

Completed MMI survey;

Analysing assay results



Exploration – Milly Milly

Tenement

E09/1811

Location

196km west of Meekatharra, 58km east of Jack Hills iron project

Area

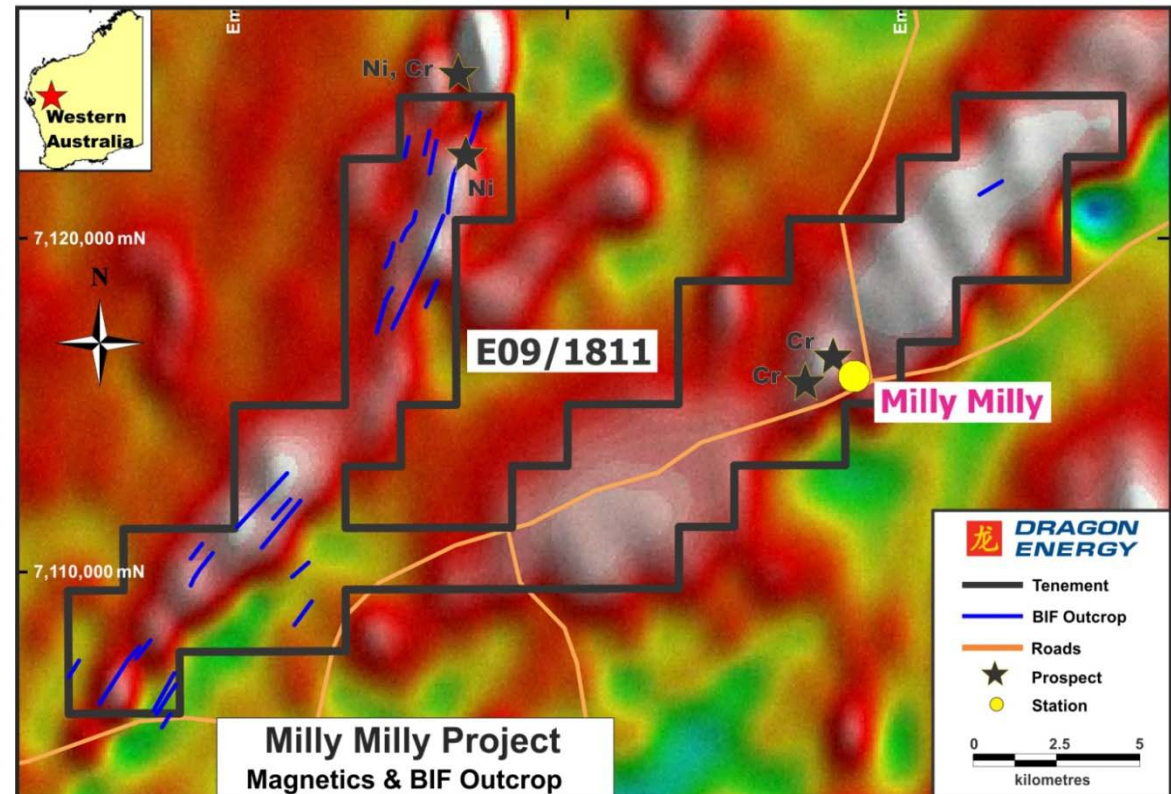
191km²

Targets

Iron, Base metals

Comment

Under review



Exploration – Yamarna

Tenement

E38/2665

Location

120km north-east of Laverton

Area

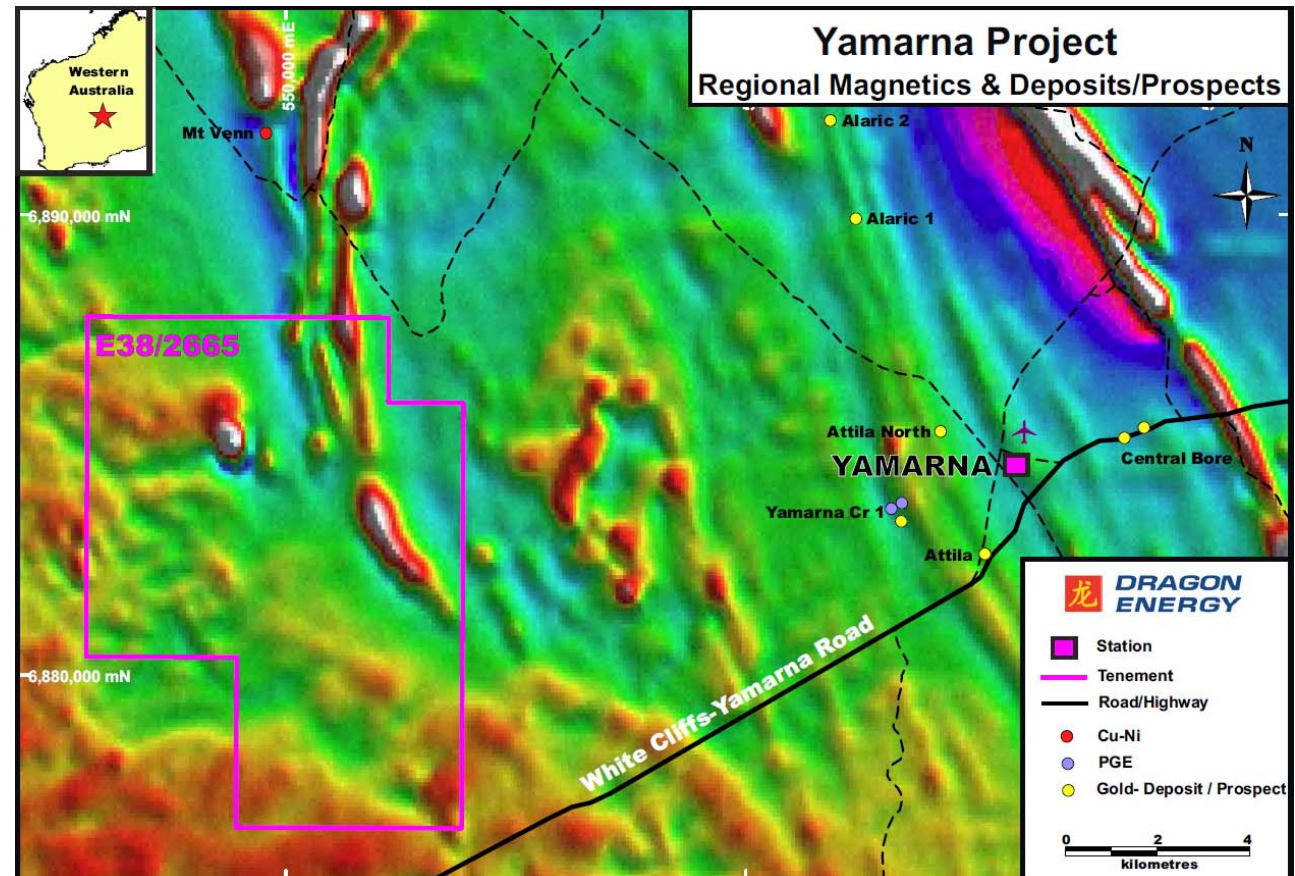
75km²

Targets

Base metals, Gold

Comment

Greenstone succession at Mt Venn (Cu, Ni) is also present on E38/2665



Exploration – Meekatharra

Tenement

P51/2734 – 2744

Location

13km south-east of
Meekatharra

Area

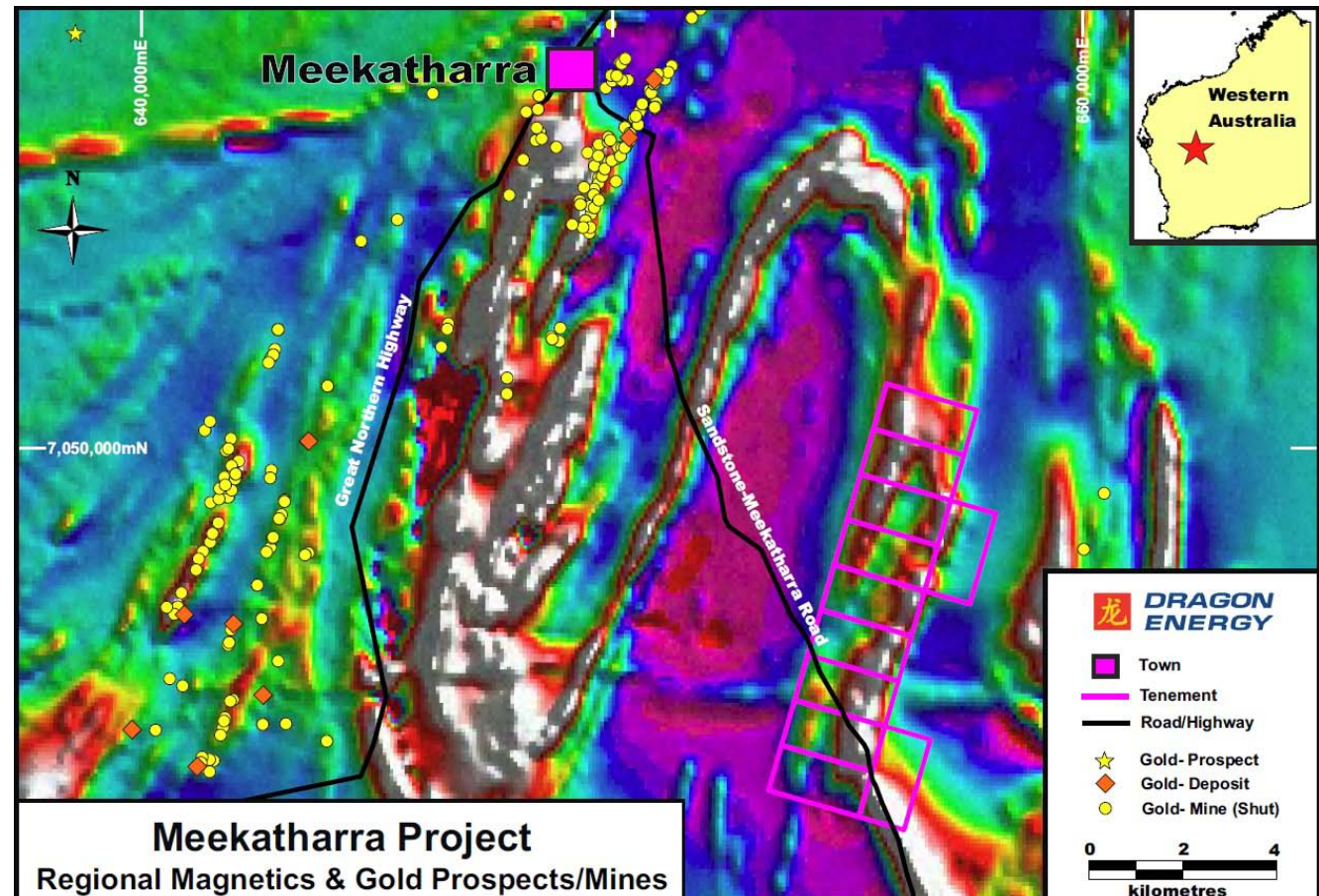
22km²

Targets

Gold

Comment

Gold and arsenic anomalies
identified by previous (limited)
exploration activities



Priorities in 2011

- Pilbara Iron Project
 - Examine early development options
 - Expand and increase confidence level of the Resource at Rocklea
 - Establish maiden JORC Resource at Nameless
- WA Exploration Projects
 - Ongoing exploration on existing tenements
 - Apply for and/or acquire new tenements
- Corporate
 - Evaluate new targets and acquisitions



Competent Person / Exploration Target

Competent Person's Statement

The information in the report to which this document is attached that relates to Exploration Results is based on information compiled by Mr Mark Hafer, who is a Member of The Australian Institute of Geoscientists. Mr Hafer is a full-time employee of the company. Mr Hafer has sufficient experience which is relevant to the style of mineralisation and type of deposit under consideration and to the activity which he is undertaking to qualify as a Competent Person as defined in the 2004 Edition of the 'Australasian Code for Reporting of Exploration Results, Mineral Resources and Ore Reserves'. The information that relates to the Rocklea Mineral Resource Estimate has been compiled by Mr Stephen Godfrey who is a Member of the Australasian Institute of Mining and Metallurgy and The Australian Institute of Geoscientists and an employee of Golder Associates Pty Ltd. Both Mr Hafer and Mr Stephen Godfrey consent to the inclusion in the report of the matters based on their information in the form and context in which it appears.

Exploration Target

Exploration Targets are reported according to Clause 18 of the JORC Code. Potential quantity and grade of mineralisation is conceptual in nature. Further exploration, particularly drilling, is necessary before any identified Mineral Resource can be reported. It is uncertain if further exploration will lead to a larger, smaller or any Mineral Resource.