

Ref: # 208/09

9 December 2009

ASX Ltd
Companies Announcement Office
Electronic Lodgement System

Dear Sir,

**Re: Beach Petroleum Limited Weekly Drilling Report
Week ending 9 December 2009**

The drilling report and well location maps for the week ending 9 December, 2009 are attached. Highlights of the week's activities include:

Arrowie Basin (South Australia) - Paralana-2 Geothermal Exploration Well

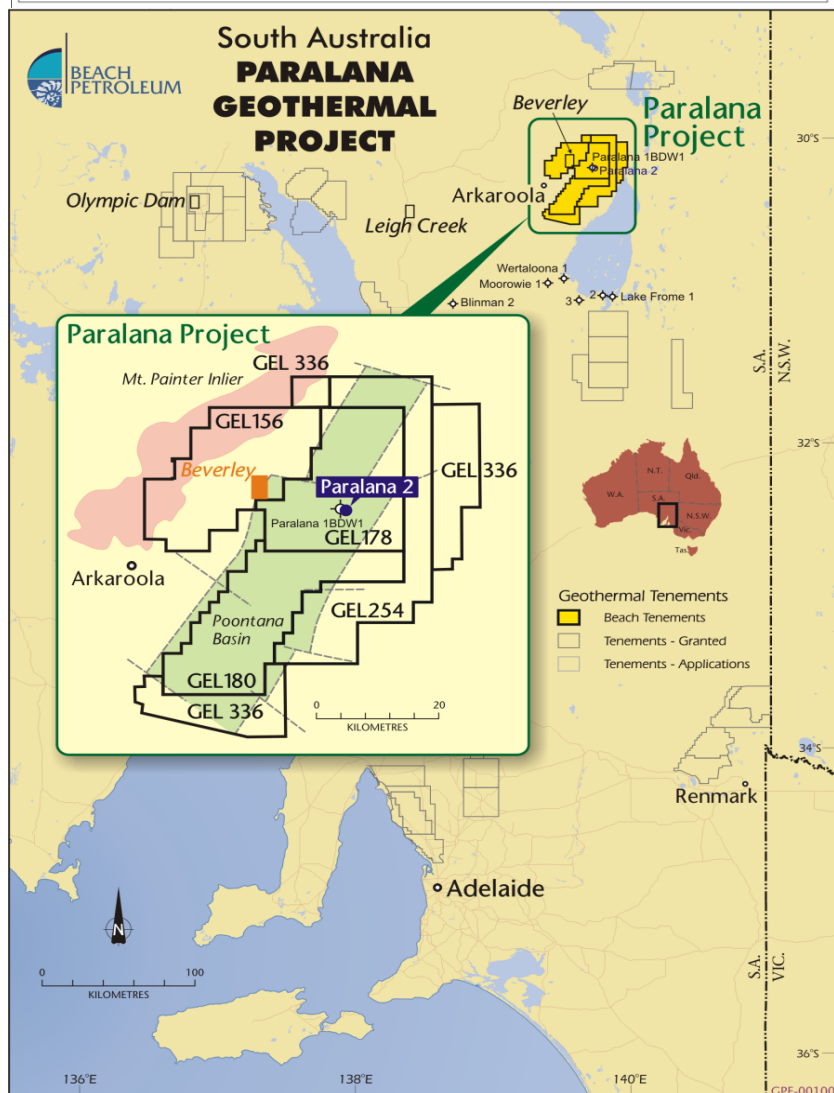
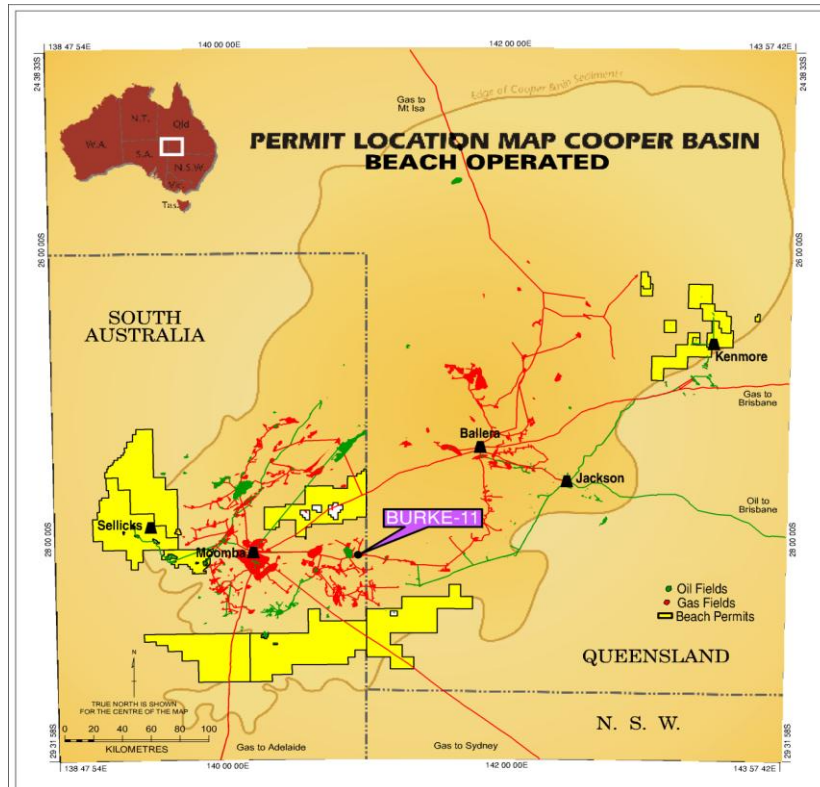
The running of the 7" casing string at Paralana-2 (GEL 178) has commenced. Well completion and rig release is expected to occur in mid to late December 2009. Post casing evaluation is expected to be undertaken early in the New Year to determine the static temperature and rock properties of the basal interval of the well. (Beach, well Operator, earning 21%).

Yours faithfully,



Hector Gordon
Chief Executive Officer

25 Conyngham Street, Glenside South Australia 5065
GPO Box 175 Adelaide 5001
Telephone (618) 8338 2833
Facsimile (618) 8338 2336
Beach Petroleum Ltd
ABN 20 007 617 969
www.beachpetroleum.com.au



Weekly Drilling Report

Wednesday 9th December 2009

Well	Participants	Weekly Progress & Summary	Primary Targets
Paralana-2 GEL 178 Geothermal Exploration Arrowie Basin, SA	BPT* 21.00% PTR 69.00% TRU 10.00%	Report Time: 0600 hrs (CST) 9/12/2009 Depth: 4012m (TD) Operation: Running 7" casing. Progress: 0m	Bolla Bollana Formation
Burke-11 PPL 12 Gas Development C/E Basin, SA	BPT 20.21% STO* 66.60% ORG 13.19%	Report Time: 0600 hrs (CST) 9/12/2009 Depth: 804m Operation: Running surface casing. Progress: 804m	Epsilon Formation, Patchawarra Formation

(s) Secondary Targets
BPT Beach Petroleum Ltd
TRU TRUenergy Pty Ltd
STO Santos Limited

(*) Operator
ORG Origin Energy Resources Ltd
PTR Petratherm Ltd