

GOLD POTENTIAL OF BATIE WEST ENHANCED BY DEFINITION OF 12.5 KM LONG GEOCHEMICAL ANOMALY

- **Ampella Mining Ltd has defined an open-ended gold anomaly in soils and shallow auger drilling samples over a 12.5 kilometres strike distance in the Tiopolo portion of the highly prospective Batie West shear zone in Burkina Faso, West Africa.**
- **The high tenor anomaly, with gold levels of 20 parts per billion and above (peaking at 3 grams per tonne) is almost continuous over the entire length of the sampled area which includes the recently drilled Konkera and Kouglaga prospects where drill results included 22 metres at 5.04 grams per tonne (gpt) gold from surface, 28 metres at 3.53 gpt from 6 metres, and 25 metres at 2.27 gpt.**
- **These geochemical results are considered extremely encouraging and will assist in the targeting of a 5000 metre drill program planned for April/May 2009**
- **An intensive program of soil and auger sampling, which commenced in November, is on-going and will cover the entire 18km by 3km prospective area, including a further 5.5km of strike within the Tiopolo portion of the Batie West Project. This program will be complete during March 2009.**
- **Tiopolo is only one of five contiguous Permits comprising the whole of the Batie West Project, all of which at this stage are considered equally prospective.**
- **The gold mineralisation is associated with a 110km long shear zone within the Batie West Project area held by Ampella Mining Limited.**

Ampella Mining Limited (ASX: AMX) is pleased to announce that geochemical programs over the Tiopolo Permit have returned significant gold results. Samples were collected as part of a detailed soil and auger-drilling program over the Batie West Project area in Burkina Faso, West Africa.

The Tiopolo Permit is one of five tenements collectively known as the Batie West Project (Fig. 1) which covers a total area of 811 square kilometres. The tenements are located along the 110 kilometre long sheared south-western limits of the Boromo Greenstone Belt within Burkina Faso, which is bound by the countries of Ghana to the east and Cote d'Ivoire to the south.

A total of 2933 soil and auger geochemical samples have been assayed to date over a 12.5 km long by 3.0 km wide alteration corridor on the Tiopolo Permit. The currently reported samples have been collected on a 200m by 50m grid and the maximum gold value was 2960 ppb gold (about 3 grams per tonne (gpt) gold). Infill samples on a 200m by 25m grid have also been collected and will be selectively assayed to assist targeting of the stronger gold anomalies.

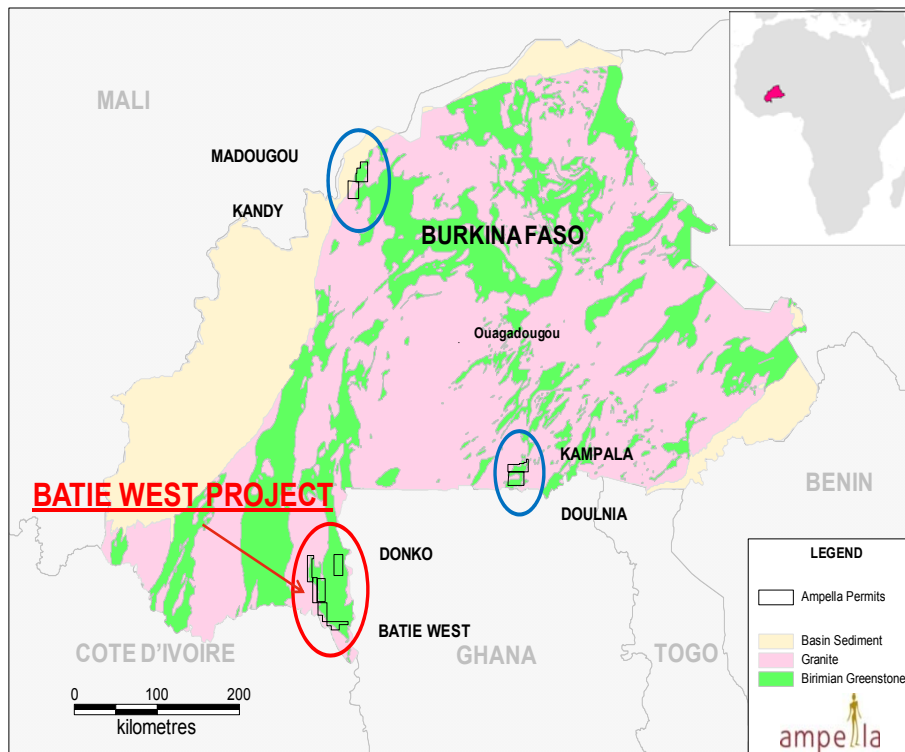


Figure 1.
Location diagram showing Ampella's exploration permits in Burkina Faso, West Africa.

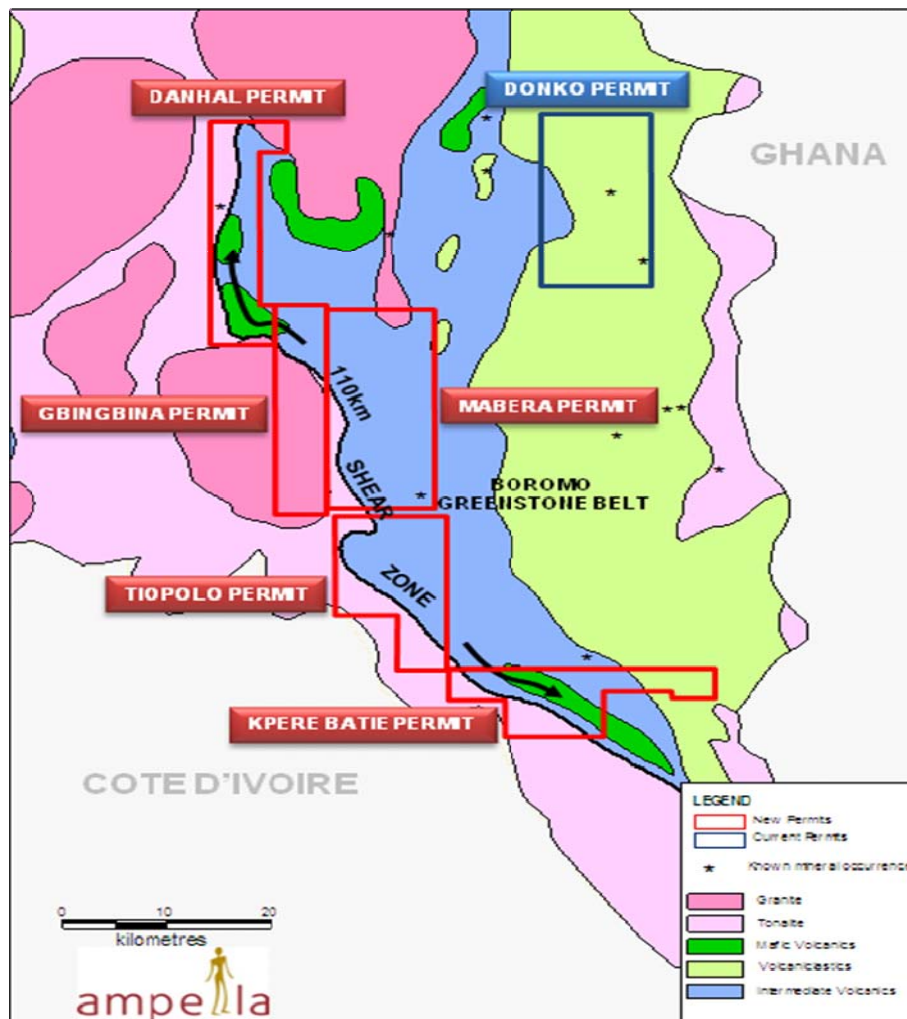


Figure 2.
Position of the Tiopolo Permit relative to the 4 remaining permits which comprise the Batie West Project

Gridded soil geochemical assays for gold are presented in figures 3 and 4, and highlight the strength and continuity of the gold anomalies on the Tiopolo Permit. Using a greater than 90 percentile separation of the data (greater than 20ppb Au) an almost continuous 12.5 km gold in soil anomaly can be outlined (Fig. 3). Significantly higher gold anomalism (>95 percentile) was identified at the main prospects of Konkera (approximately 3km long), Kouglaga (approximately 2km long), and Amimbiri (approximately 2.5km long). At Konkera in September 2008 an initial reverse circulation drill program intersected wide zones of gold mineralisation, including 22 metres at 5.04 grams per tonne (gpt) gold from surface, 28 metres at 3.53 gpt from 6 metres, and 25 metres at 2.27 gpt amongst a number of significant intersections.

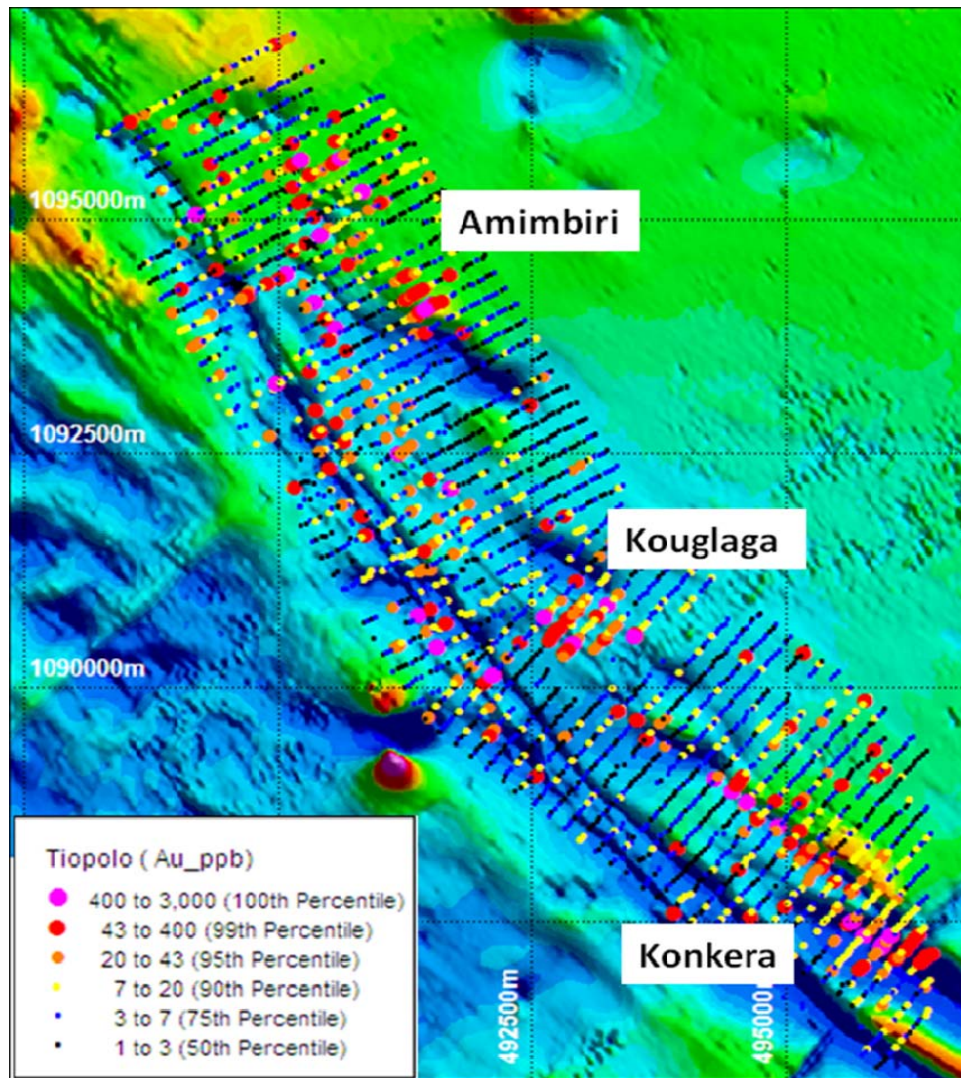
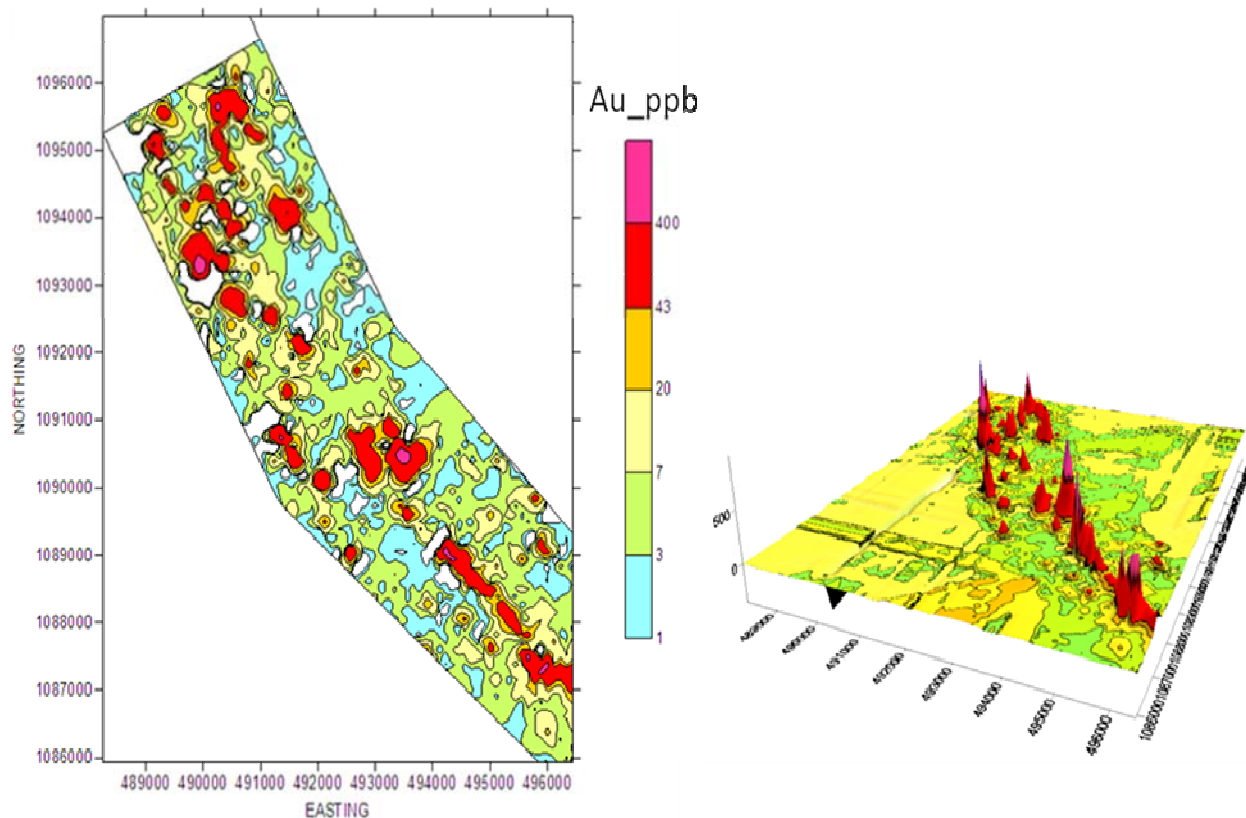


Figure 3.

The 12.5 km long gold in soil anomaly located on the Tiopolo Permit overlain on Ampella's airborne geophysics (Analytical Signal).

These geochemical results are considered extremely encouraging and will assist in the targeting of a 5000m reverse circulation and diamond drill program planned for the Tiopolo Permit at the beginning of April 2009 following a successful underwritten rights issue to raise \$2 million in February 2009.



Figures 4 & 5.

Contoured gold in soil anomalism over a strike length of 12.5km on the Tiopolo Permit at Ampella's Batie West Project.

For further information contact:

Dr Paul Kitto

MD/CEO

Mobile: 0419 883 563

Website: www.ampella.com.au

or

Mr Bill Ryan

Chairman

Mobile: 0417 172 923

The information in this report that relates to exploration results is based on information compiled by Dr Paul Kitto, who is a member of the Australian Institute of Geoscientists. Dr Kitto is employed by Ampella Mining Ltd.

Dr Kitto has sufficient experience relevant to the style of mineralisation and type of deposit under consideration and to the activity he is undertaking to qualify as a Competent Person as defined in the 2004 Edition of the "Australian Code of Reporting of Exploration Results, Mineral Resources and Ore Reserves". Dr Kitto consents to the inclusion of the matters based on information in the form and context in which it appears.